



Inside

Terrorism. 'The death of one person diminishes us all' Page 3



Don't wait till tomorrow to report crime or suspicious activity. page 6



Thomas Hughson. Recollections of an early settler, pages 6,7



Max Cryer remembered fondly by Opunake & Coastal News staff member. page 9



Businesses join forces to help community. Page 12



A fascinating but forgotten man. page 13



A hundred years of croquet. Page 21.

Fire destroys everything – can you help?

An Opunake man has lost virtually all his possessions when a caravan in King Street in which he was living was completely gutted in a fire on Tuesday night September 7. The caravan and its contents were uninsured.

The Opunake Fire Service was alerted at around 10 pm and was there within minutes but by this time the caravan was well ablaze.

The owner Graeme Powell says he was working in a small shed on his property when he heard a bang. He came out and found the caravan full of black smoke. It then burst into flames. He says he attempted to put it out with a hose but it was futile. "Once it was alight it was hopeless."

The fire was later found to have been started by a fan heater.

"I just turned it on so the place would be warm when I came back," said Graeme adding he went to the shed to get a screw driver to finish some seating he was installing and was only away ten minutes.

A neighbour behind his property called the fire service.

The cause of the fire was clearly the fan heater said Graeme who added it was not very old and that he brought it up from Wellington when he bought the property three years ago. The fan had apparently exploded and had left a huge hole in the floor of the caravan. A next door neighbour said later they also heard the explosion before they smelt the smoke.

Graeme was about to sell the caravan which he'd recently renovated to raise funds to turn a shipping container he'd brought into a tiny home.

Sadly all his possessions were in the caravan.

Commented Craig Dingle, Opunake Fire Brigade chief



The caravan ablaze.



Graeme Powell and the remains of his caravan. Though the interior was plywood, the caravan was aluminium which also burnt and buckled in the fire.

possessions are gone," he said describing his reaction to the disaster. "I couldn't believe it had happened."

Lost in the fire was also a lot of historical papers relating to his family which he kept in an old doctor's bag which was completely destroyed. He also hasn't been able to find the keys to his car though he has found the keyring with the other keys attached. The actual car key had a plastic end which melted in the heat and he hasn't been able to find the key itself. The ignition and locks on the car have now been replaced "so it's now usable," said Jim Dodunski from Ihaia Motors in Opunake. Graeme is currently sleeping in his car.

If anyone is able to help financially, or in any other way, could they contact Graeme on 021 772 128 or the Opunake & Coastal News at (06) 761 7016.



Everything was destroyed in the fire.

fire officer who attended the fire, "They go up fast". He added the foam upholstery inside a caravan will ignite and once alight it's very flammable, it gets to a very high temperature. Craig also had a word of caution "If you've got a caravan or are freedom camping, keep your caravan 2-3 metres away from another vehicle just in case one catches alight."

Graeme moved to Opunake from Wellington three years ago attracted by the affordable housing and, as a former surfer, being near the sea.

"It's hard to explain what it's like. All your treasured

Local news, Local people, local businesses, local sport, local arts and events.
Delivered free around the mountain every fortnight.



HOW ARE YOU GETTING ON WITH YOUR AB PLATFORMS?

We're here to help!

AB Platforms / Vet Races

Coastal Welders 027 255 8677
06 752 8138
Email us at coastalwelders@xtra.co.nz
WAREA

"Let's create your business growth strategy together"
Your only local community accounting firm



Accounting for the future, today

Hawera - Opunake - Patea - 06 278 4169

Opunake Office hours:

Mon & Thurs: 9am-3pm, Wed: 10am-3pm

RENTAL VEHICLES



- CHARTER BUSES
- VANS
- TOUR BUSES

ALUMINIUM SCAFFOLDING FOR HIRE

\$35 per day, \$50 weekend.

More than 6 days \$30 per day.

WATERBLASTER FOR HIRE

Petrol 3000 psi 15L/minC

Cost: Half day \$90, Full day \$120, Weekend \$130. Friday after 3pm return Monday 9am.

Bond for waterblaster and scaffolding \$50.

For more information contact Tracey or Christine at

PICKERING MOTORS

11 TENNYSON ST OPUNAKE PH (06) 761-8363
0800 22 11 20 Email: pickering.motors@xtra.co.nz

OPUNAKE & COASTAL NEWS

Registered office: 23 Napier Street, PO Box 74, Opunake

Phone: Office (06) 761-7016, A/h (06) 761-8206

For advertising, email: ads@opunakecoastalnews.co.nz

For editorial, email: editorial@opunakecoastalnews.co.nz

For accounts, email: accounts@opunakecoastalnews.co.nz

www.opunakecoastalnews.co.nz

Editor: Bernice McKellar

Journalists/Sales: Rolland McKellar, Bryan Kirk

Advertising/Production: Vanessa Smith

Production/IT: Shane Butler

Delivery: Thursday, fortnightly

Registered as a newspaper.

Member of the Community Newspapers Association of New Zealand



The Opunake and Coastal News is distributed free to every home and business within the rural area bounded in the north by the New Plymouth city border, extending east to Egmont Village, and around to the edge of Stratford, south to the Hawera city border and inland to Kaponga and through Eltham.

Send your your views to:

Letters to the Editor

23 Napier Street, Opunake.

Fax: (06) 761 7016

email: editorial@opunakecoastalnews.co.nz

You are welcome to use a pseudonym but must supply your name and address to us.

Car drivers and school buses

I do the Manaia-Opunake school bus run. I need to cross five narrow bridges each way. This is what happens almost daily, as an example. One Friday coming on to Kaupokonui bridge, I'm almost on the bridge with the indicator blinking (moving right) and there's a car coming 50 metres away. I'm halfway across the bridge, with the bus over the centre lane(which I have to be), and this car keeps coming, not slowing on to the bridge.. I try to move the bus left with kids on, without taking the side bridge out or having a head-on. The eyes of the car driver say it all. This type of thing happens often.

The other thing is the speed . Do you know the speed going past the bus when it's stopped to do a pick up? No it's not 100kph, it's 20kph. Yes 20kph.

Another thing is, when we both meet, me with the indicator on left, while on the other side of the bridge that car comes to a stop with no indicator going. So we both stop, because one doesn't know a basic rule, use the indicator.

On the bridge thing, it's 95 per cent woman drivers with

children in car seats in the back. I have reported a few for passing double yellow lines, but don't have the time to get number plates for the ones on the bridge. So take more care. And if it's one of you. Go get a driver test before you injure a bus load of children.

Stephen White
Manaia

Risk

Hopefully we (letters September 9) have had a chance to run the UK/US numbers resulting from the vaccine roll-out [sourced: <https://vaers.hhs.gov/> and <https://www.gov.uk/government/publications/coronavirus-covid-19-vaccine-adverse-reactions/coronavirus-vaccine-summary-of-yellow-card-reporting#annex-1-vaccine-analysis-profile>]

The question is: Is it possible an 'informed consent' process for a mass inoculation program can omit to mention adverse effects already reported in other countries resulting from that same program? Or in its own? While also omitting alternatives to that program offered by 'other' medical science ? [<https://americasfrontlinedoctors.org/> & <https://nzdsos.com/>]

Ivermectin: a multifaceted drug of Nobel prize-

ADELPHOS

Did your household power ever get cut off? You wonder, "How long till it

Jesus Outside the Walls

goes back on?" Most of us have experienced the surprise and frustration of being disconnected at night



Letters to the Editor

honoured distinction with indicated efficacy against a new global scourge, COVID-19 <https://www.ncbi.nlm.nih.gov/pmc/articles/PMC8383101/>]

Would I want to know how many are reported dead and injured worldwide as result of the vaccinations if I were doing due diligence ?

Would I want to know an nih.gov report signals another drugs 'efficacy' against Covid-19 before making my decision?

An International Journal of Clinical Practice study, headed 'Informed consent disclosure to vaccine trial subjects of risk of COVID-19 vaccines worsening clinical disease', concluded "The Risk of ADE in COVID-19 Vaccines is non-Theoretical and Compelling "(DOI: 10.1111/ijcp.13795)

Is the information that Antibody Dependent Enhancement is a non-theoretical and compelling RISK of the vaccine, included in the informed consent process?

Reference to the 911 demolitions and the CIA/JFK assassination are to illustrate the point that Governments do lie.' And that we have to consider the ramifications of that as a Truth. Society can be fooled. If necessary. professionally. And; just as the forensics of 911 as a demolition and JFK as a CIA assassination are either roundly slandered

as ' conspiracy theory' or omitted entirely from official narratives;

So too are the expert oppositions' to the Covid-19/ vax program.

Roger Morris
Oeo

Doing it in the loo

In a media release of late the Department of Conservation spokesperson came out with 'Poo in the loo, telling national park-users not to shit on the ground, but do it in the loo..

The question remains in the Egmont National Park there are less public toilet facilities open to the public park-users now than there were in the Egmont National Park when the Department of Conservation was founded in 1987, yet the numbers of visitors visiting the local Egmont National Park has increased by huge numbers according to the department. When I first entered my first guiding concession back in 1992, and onwards, we have been asking the Department of Conservation staff to provide more toilet facilities in the park, in places such as on the Mt Taranaki Summit route, and now the Pouakai and Taranaki Crossing Treks upgrades.

Ian McAlpine
New Plymouth

from our electricity. How did that feel? These power problems are a two way thing: When the power on the supply side goes off so does the receiving end. But with God His power supply is limitless and He will

never disconnect you. We are the ones who disconnect ourselves from Him.

There are many reasons people disconnect from God: my church was filled

continued page 3

Deadlines for copy

We find we are working very late on a Tuesday night to put the paper together for it to be at the printers first thing Wednesday morning.

Our deadline for copy is Monday 10am.

This gives us an opportunity to proofread the copy.

We continue to receive a lot of material on Tuesday and are struggling to process it all as well as put together the paper.

If you have trouble meeting this deadline can you let us know.

This deadline does not apply to the Cops and Fire Service columns where incidents can occur on the Monday and Tuesday.

We do appreciate your contributions, so thank you in advance for your co-operation.

Editor

Opunake & Coastal News Paste Up Night



More Opunake & Coastal News' out

We have printed more copies of the Opunake & Coastal News.

It is available on stands at the following locations

New Plymouth:

Ate Forty One, Tukapa St, Westown

Challenge Spotswood

The Health Shop on the ground floor at Centre City

The Store, Cnr Tukapa St & Wallath Rd

Waitara:

Outside the North Taranaki Community House Trust, 67 McLean St

Inglewood:

Inglewood Book Centre, 31 Rata St

Stratford:

Stratford Knit & Sew, 202 Broadway

Hawera:

Outside First National, Cnr of Victoria and High Streets

Outside Nursery Rhyme, 158 High St

Papers are also available at

The Sunshine Dairy, Hawera

The Normanby Dairy

Swetes Dairy, Manaia

Pastimes in Opunake

Farm Source, Pungarehu

Tim's Barbershop, Moturoa

Okato Takeaways

ADELPHOS

Jesus Outside the Walls

continued from page 2

with hypocrites and gossips, the church wants my money, my young child died and God abandoned me, I was too busy on Sunday or I've been away too long now... The list goes on. But this doesn't mean you should stay disconnected from your faith. A disconnection from God and the church are two different things. Just going

to a church doesn't make you a Christian any more than going to an All Blacks match makes you a premier athlete. But God's love for us remains constant. His love is always there despite years of our disconnection, sinfulness, alienation or even hatred of Him. Despite Israel's repeated disobedience God was still faithful to His promises. To

those Christians who live outside the walls of a church building or feel disconnected from God, Jesus will meet with you outside the walls of the institutionalised church. Many people in the Middle East are now becoming Christians, but are unable to safely worship in a church building. If they did they'd be murdered. But still, their faith is growing. However, for us in a

democratic and free New Zealand, we have today's technological resources of TV and internet programmes to worship God. I recommend TV pastors such as Dr. Charles Stanley and Dr. David Jeremiah. They and others offer inspiring, loving and biblically based worship services on Shine TV channel 25. The "Church at Home" time slot is on Sunday mornings from 8:30

am to 1 pm. Here's the thing. Jesus said that a Christian who's disconnected from God's power is like a light bulb that's hidden from sight and "...put under a bowl or a bed." Instead He said we should put our light on a stand for everyone to see (Mark 4:21-22 NIV). Our Lord said it only takes a little spark of faith as small as a mustard seed to reignite your

faith (Luke 17:6). God is in the free power supply business and earnestly desires to reconnect His saving power with each of His customers who have disconnected themselves from Him. Is it time to make your reconnection? What have you got to lose? Manaakitanga

Adelphos

EDITORIAL

Terrorism

This country lost its innocence with the Christchurch Mosque attacks.

What happened on our own Ides of March in 2019 blindsided us all. Nobody saw it coming. The effects of the Christchurch attack were felt in Taranaki, as the 51 people killed included Dr Amjad Hamid, a popular and highly respected cardiologist practising at Hawera Hospital. This year we have remembered the second anniversary of the

Christchurch attack as well as the 20th anniversary of the 9/11 hijackings in the United States. Adding to all this was the stabbing attack at Countdown in Lynnall, Auckland. Questions will continue to be asked as to what the government could have done to prevent the Lynnall incident from taking place, but it could also be asked what any government can do to protect its citizens from something like this happening. After all, the United States with the strongest military in the

world could not prevent hijackers crashing passenger planes into the Twin Towers and the Pentagon on September 11, 2001. Nearly 90 years ago, a former and future British prime minister said something similar about the threat posed to British cities by enemy bombers. "I think it is well for the man in the street to realise that there is no power on earth that can protect him from being bombed," Stanley Baldwin told the House of Commons in 1932. "The bomber will always get

through." He said this before World War II when British cities would be bombed by the Luftwaffe, and even before Hitler came to power in Germany in 1933. Today the threat is more likely to come from a lone individual or a small group of plotters, than from the air force of a foreign country, but similar arguments can still be made. After events such as the Lynnall attack there are always the usual pieces written about the

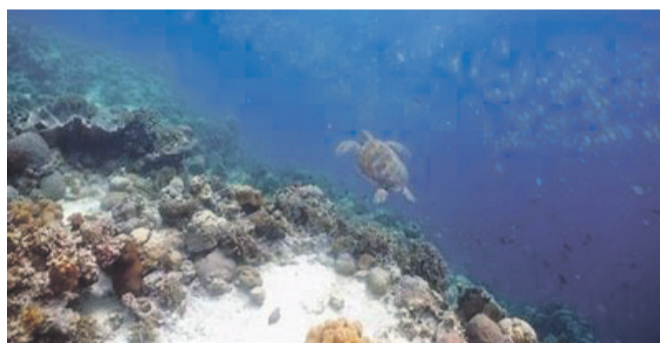
psychological profiles of people who carry out such attacks. The profile of the Lynnall stabber would appear to be similar to that of Anders Breivik, the far right extremist who killed 77 people in Norway in 2011, however different the ideological motivations of the two men may be. In times like this rather than looking for some ideology or group to blame, perhaps it's better to look out for each other instead. The words of an English cleric poet living in the 17th century seem particularly

appropriate at times like these. As Dean of St Pauls John Donne saw thousands die in an outbreak of bubonic plague and he almost died himself. "No man is an island, entire of itself," he wrote. "Each man's death diminishes me, for I am involved in mankind. Therefore, send not to know For whom the bell tolls, It tolls for thee."

Bryan Kirk.

Nation abstains on global seabed mining moratorium vote

The New Zealand Government's decision to abstain from voting in support of a deep sea mining moratorium at the IUCN World Conservation Congress has been criticised by Greenpeace Aotearoa. New Zealand, which is represented at the IUCN World Conservation Congress by the Department of Conservation (DOC), abstained from voting while the motion received overwhelming support from other countries including the Pacific island nation of Tonga. Greenpeace Aotearoa seabed mining campaigner James Hita said the New Zealand Government continues to fall behind the rest of the world in preserving our oceans.



Imagine what seabed mining would do to this?

"It's incredibly disappointing to see the New Zealand Government opt out of supporting the deep sea mining moratorium. Deep sea mining is one of the greatest threats our oceans face at the moment, especially in the Pacific. We don't have time anymore to simply abstain from voting.

"New Zealanders and our Pacific cousins need New Zealand's government to be on the right side of history on deep sea mining. Abstaining from voting is not. Greenpeace Aotearoa wants the Government to take a leadership position on deep sea mining by supporting the moratorium

especially when we are a Pacific country," says Hita. Delegates at this year's global conservation summit also voted overwhelmingly for the reform of the International Seabed Authority (ISA), the UN-mandated body tasked with regulating this activity. Eighty-one governments and government agencies attending the IUCN World Conservation Congress voted in favour of the moratorium, while 18 voted against and 28 abstained. Around 577 NGOs and civil society organisations also voted in favour, while only 32 voted against and 35 abstained. Other countries who abstained from voting included the United Kingdom, Canada, the

United States of America, Australia and France. "The relevance of the moratorium's support is even more important following the South Pacific nation of Nauru's decision to trigger the "two-year rule" only months ago," says Hita. The two year rule requires the ISA to allow the nation to begin mining in two years' time under whatever regulations have been established by then. Nauru sponsors a subsidiary of a Canadian company previously known as 'DeepGreen'. Recently, DeepGreen formally merged with Sustainable Opportunities Acquisition Corporation to form The Metals Company, which is valued at \$2.9 billion. Activists aboard

Greenpeace's Rainbow Warrior confronted a ship chartered by DeepGreen in the Pacific this year, displaying banners reading "Stop Deep Sea Mining" and painting "RISK" on the side of the vessel. Greenpeace Aotearoa is also calling on the New Zealand government to ban all seabed mining and a supporting petition has been signed by more than 22,000. "The New Zealand Government failed to step up and show support but the overall vote sends a clear and powerful message to the International Seabed Authority that there is no global support to mine the deep sea," says Hita.

NEW SHED An exciting development in Value Farm Sheds.

We've been building quality Farm Sheds for over 50 years. Now we have this exciting new option: Clearspan Sheds. You can get an estimate + the plans simply by giving us a call!

VALUE Building Supplies | **BuildLink** Buy Better Build Better

1 KATERE RD, NEW PLYMOUTH PH: 06 759 7435 EXT: 715 | JAMES STREET INGLEWOOD PH: 0800 245 535 www.valuebuilding.co.nz

CARING FOR YOUR COMMUNITY

INGRAM'S PHONE (06) 278 4786 Bin & Skip Hire

PROUD TO BE LOCALLY OWNED & OPERATED

COUNCILLOR'S COMMENT

A highway emergency



CR BRYAN ROACH

Hi All
We are in a State Highway emergency. Our highways are slowly sinking and safety concerns are not being addressed. The Waka Kotahi, New Zealand Transport Agency solution for this is to do nothing or do it when finances permit. When you have Councils around New Zealand asking for a better road network and the Government doesn't deliver you have a problem. You do not need a 50 page report to tell you this. All you have to do is look outside your car window. Obviously Waka Kotahi, New Zealand Transport Agency has run out of money, so how do you fix

this? Increase taxes on petrol, only use the tax for roading and not use it for railways, cycle ways, walkways etc. Electric vehicles should pay their share of tax to use the roads. They should not be free. Maybe introduce a regional tax like they did in Auckland? Maybe Councils should run the whole roading network for New Zealand so the status quo is not an option. It's not working. Our roads are going backwards. Every week we have a Council meeting about the Government's proposed "Three Waters." The Government wants to take over and run all of Council's storm water, waste water and drinking water, which

will mean they will run it the same way that the Government runs roading or rail of housing. Is that what we really want? Can the Government really run it better than our local Councils? Your Council has not yet decided whether to opt in or opt out of the Government's Three Waters proposal. We are still having weekly meetings. What's next? Does Government want to get rid of all Councils around New Zealand and run it all from Wellington. To my fellow farmers this is the wettest spring that I've known of in the last 25 years. It's the slowest grass growth in the last 25 years. You have many tools in

your toolbox to use-urea, meal, molasses, silage, hay, haylage. Everybody's in the same position. Get through this spring and hopefully next year's is better. Keep on farming. We are essential workers during lockdown. Carbon emissions and greenhouse gases went down. It's funny that farming as an essential work kept on going.

Cheers
Roachie from the Coast

Community views wanted on Three Waters Reform

South Taranaki District Council is asking the community to share their views on the future of three waters by completing a short survey.

The government is currently proposing significant changes to the delivery of three waters (stormwater, wastewater and drinking water) including the creation of four publicly owned entities covering the whole country to deliver these services. For South Taranaki District this would mean our three waters assets (as well as the debt attached to the assets) would be taken over by a new entity that would include councils across the Waikato (including Hamilton), Bay of Plenty (including Tauranga and Whakatāne) and Taranaki Regions and the Ruapehu, Whanganui and Rangatīkei Districts.

The Government has outlined a process for councils to follow, which includes a period of full consultation with the community. Before then the Council will be analysing and assessing the government's proposal and the impacts on local communities. Every council has until the end of September to do this.

South Taranaki District



Council workers at the Waiaua River after recent flooding.

Mayor Phil Nixon says while this is a government-led proposal, and Council doesn't have all the information yet, it is important to include the community's feedback at this stage in the process.

"While the government has said formal consultation will come later, we think it's important to get our community's initial thoughts on the proposal at this stage, as that will help us assess local impacts and concerns," says Mayor Nixon.

"The Government believes it has established a compelling 'case for change' based on the financial requirements needed over the next thirty years to upgrade and manage the nation's three

waters infrastructure to meet increasing health and environmental standards. They say the amount of investment needed would be almost impossible for councils to fund on their own, so some kind of change is needed."

"What we do know is that compliance costs for three waters will increase significantly over time so a key consideration for us is whether we are prepared to pay higher rates to keep ownership and control of these assets or do we potentially pay lower rates (as suggested by the government's modelling) by spreading the cost out across a wider area but see the ownership and control of

these assets sit with central government."

"Our Council has a number of questions and concerns about the proposal and this survey will help us better understand the community's views on this balance of keeping costs affordable for households and retaining the delivery of three waters within council. After this, the government has said they will consider next steps, including the process and timing for decision-making and consultation," says Nixon.

The survey can be filled out on the Council's website and closes on 29 September.

Hipp Accounting Limited
If you find yourself spending too much time on administration/ accounting and not enough on what earns you money, it is time to call
Hipp Accounting
Phone: 06 928 5608
Mobile: 027 610 0270
365 Ketemarae Road, Rd15, Hawera 4675
www.hippaccounting.co.nz

CALL OUR FRIENDLY SALES TEAM AT THE
OPUNAKE & COASTAL NEWS
23 Napier St, Opunake
06 761 7016
See how our high readership rate can work for you

Simple But Significant
a simple cremation & burials
Helping Taranaki families with a range of simple, professional funeral services. With affordable caskets, urns & jewellery.
0800 236 236 233 Carrington St New Plymouth
www.asimplecremation.co.nz

You can rely on us for your energy needs
www.rockgastaranaki.co.nz
Transform your home - all your hot water, space heating and cooking needs from your trusted local Rockgas supplier.
Count on us - reliable delivery of 45kg LPG cylinders to your home, business, or farm where ever you live.
Locally operated and proud to be part of your community
rockgas TARANAKI
Call Rockgas Taranaki
0800 LPG 2 YOU or 06 757 9264

INSTALL RETRACTABLE INSECT SCREENS FOR A BUG FREE, SPRAY FREE HOME
Window handles, seals, hinges & stays • Security locks for windows & doors
Sliding and bi-fold door rollers, locks & handles • Retractable insect screens
Local family business servicing Coastal Taranaki
exceed we fix windows & doors
Call free anytime **0800 37 37 10**
www.exceed.co.nz

CRAWFORD AGRITECH Ltd
TRACTOR & MACHINERY SERVICE & REPAIRS
ON FARM SERVICING
AIR CONDITIONING SERVICE, REPAIRS AND HOSE MAKING
SPARE PARTS & FARM OILS
IMPLEMENTS & ATTACHMENTS - SALES AND SERVICE
FACTORY TRAINED TECHNICIAN
TARANAKI & WANGANUI INDEPENDENT FERGIE TRACTOR SPECIALISTS
Ph **06 762 8023**
Ian Crawford
Mob **0272 207 701**
MASSEY FERGUSON | FORD | SAME | LANDINI | ISEKI | VALTRA | MATBRO INTERNATIONAL | MERLO | DAVID BROWN | RENAULT | URSUS | JOHN DEERE
MORRIS LUBRICANTS the winning formula since 1869



Milk run comes to playcentre

The children of Awatuna and District Playcentre enjoyed a recent visit from Fonterra and got to look at a tanker. They all got to look inside the cab and learn about what it does and how it collects milk. From left. Luca Hopkins (1), Ella Hopkins (3), Katie Starr (3), Harry Perkinson (4), Carter Ardern (4), William Ardern (4).

TRC stays on target amid changes and disruptions

The Taranaki Regional Council has achieved most of its targets for the financial year to 30 June, according to its Annual Report.

“We finished the year in a strong financial position and we were also able to start making the changes needed to prepare the region for the future,” says Council Chair David MacLeod.

The year-end surplus was \$11.6 million, mainly thanks to property and asset revaluations and the build-up of funds for Waitara River catchment improvements and the Kaitake Trail Te Ara, with progress on both projects subject to ongoing

negotiations with iwi and hapū. There were also significant injections of Government COVID-19 funding for some projects and programmes. Excluding these extraordinary influences, the budget ran as planned.

The Council began taking steps to meet new requirements rolling out under the Government’s Essential Freshwater package. This work continues, and will be one of the largest projects in the Council’s history.

It is also eyeing implications of the Three Waters reforms, the new

legislation being developed to replace the Resource Management Act, and the Government’s review of the future for local government, which has just got under way.

During the year, a record 1 million plants were distributed to the region’s farmers under the long-running Riparian Management Programme, thanks in part to a \$5 million COVID-19 funding boost. Towards Predator-Free Taranaki also benefited from COVID funding, along with the Yarrow Stadium Plus redevelopment project, which is progressing well.

“The Council is well placed to continue its work protecting livelihoods, improving lifestyles and taking Taranaki forward,” says Mr MacLeod. “We’re also determined to ensure Taranaki’s voice is heard clearly as the Government continues fleshing out its significant initiatives that are set to transform the role and shape of local government in the next few years.”

TRC confirms representation arrangements

There will be 11 councillors elected to the Taranaki Regional Council next year, including one representing a region-wide Māori constituency.

Councillors have voted to confirm their initial proposal for the 2022 local body elections.

The now-final proposal will see the total number of elected members remain at 11, including 10 from the New Plymouth (5), North Taranaki (2), Stratford (1) and South Taranaki (2) general constituencies, as well as one from a new Taranaki Māori constituency.

It was one of two options discussed, with the alternative being a total of 13 councillors. That would have meant three South Taranaki general constituency members and two from one or more Māori constituencies.

However the majority believed 11 councillors was the

right number for a region of Taranaki’s size and the mix of members would allow fair and effective representation for all communities of interest.

Representation reviews are a requirement of the Local Electoral Act 2001 and must be held at least every six years. This review was prompted when the Council voted earlier this year to create a Māori constituency for 2022.

Public submissions were sought on the Council’s initial proposal, with 14 received. Of those, five submitters presented their submissions in person. As a result of that hearing, councillors requested the alternative of 13 councillors be presented as an option.

The final proposal will be publicly advertised with appeals or objections able to be lodged up until 29 October.

The final proposal must then be submitted to the Local Government Commission for approval, as the Stratford population to member ratio again falls outside the guidelines. This has previously been approved by the Commission.

If appeals are received, these will also be considered by the Commission. It will have until 11 April 2022 to make its determination.

OUR PEOPLE MAKE THE DIFFERENCE



Proud to support Coastal families

vospers 06 759 0912
funeral services 257 Devon St East, NP
vospers.co.nz

Promote your events in the

OPUNAKE & COASTAL NEWS



INNOVATIVE AND VERSATILE STITCHERY SOLUTIONS

MASKS FROM \$9

ALTERATIONS, REPAIRS, UPHOLSTERY, LEATHER

66 Bridge St, Eltham | Ph Barbara 027 470 7077

Email: mrsstitchery@gmail.com



LOOKING FOR A REAL ESTATE PROFESSIONAL YOU CAN TRUST?

Call **Viv Scott** today for help with buying, selling - or for a friendly, confidential chat to discuss your options.

Viv Scott
M 027 441 4596
E viv.scott@eieio.co.nz



LAWYERS

OPUNAKE LAWYERS Thomson O’Neil & Co.

Our Opunake Office is attended by:

Robert England on Wednesday & Fridays for buying and selling houses, farms & businesses; Trusts, Wills and Estates.

Mark Utting on Thursdays for buying and selling houses, farms & businesses; Trusts, Wills, Estates and refinancing matters.

FOR ALL YOUR LEGAL REQUIREMENTS

30 TASMAN ST, OPUNAKE

PH: 761 8823

NEWTON GORDGE JOINERY 2016 LTD

ALL DOMESTIC & COMMERCIAL JOINERY



• Kitchens • Stairways • Vanities • Lounge Units • Bench Tops • And More

67 Breakwater Rd (up Norma’s Way) • NEW PLYMOUTH • PHONE (06) 751 5065 • FAX (06) 751 5085 • WWW.NEWTONGORDGE.CO.NZ

COASTAL COPS

Hello again. What has happened to those warm sunny days of spring? If it's not raining it's blowing a freezing cold south westerly. Bring on those long hot summer days with no more bubbles.

Unfortunately the recent bad weather has not done much to slow down things on the crime front. We have been busy lately with domestic assaults, car crashes and mindless wilful damage by a few younger people in the community who have



CONSTABLE KYLIE BROPHY

no respect for our town or the property of anyone who lives in it.

On this matter I would like to raise two points. If you

see or hear something going on that shouldn't be call 111 and give us a fighting chance to catch them in the act. All too often we have heard two or three days later about incidents where someone has seen something happening and not called 111 as they did not think it wasn't serious enough. Please call and report what you have seen. If you discover something that is non-urgent

call the alternative number of 105. We know that we are not always able to attend immediately, but if you don't call these people just get to cruise around town and cause havoc as they please.

The second matter is a delicate one. We all live in a small community where most people know each other or know of each other; the problem with this is that some people are reluctant to

talk with us when they know someone has been doing something illegal. However, you must consider that by not coming forward you are only allowing the behaviour to continue and, as with most things, the more they get away with the more they do. Next time it might be your house broken into or your vehicle that is stolen.

The theme for this article as you have probably guessed is

call, call, call whenever you see anything going on you believe shouldn't be and help us keep the Sunshine Coast – (where it is always shining but often behind the clouds), a great place to live.

That's about it for now, remember, all information will be treated as anonymous unless requested otherwise and alternatively you can call Crimestoppers on 0800 555111.

Historical sketch of the West Coast Taranaki Methodist Mission

by Thomas Hughson Snr



Thomas Hughson.

I landed in Opunake in March 1880 as a member of the Armed Constabulary, and was stationed in the very substantial redoubt erected on the top of the cliff directly above the present surge chamber of the

Electric Power Board. The redoubt consisted of a very substantial earth work, a very deep trench and a sentry walk right around the inland sides of the wall. Inside were two large barrack rooms, officers' quarters, store room and library. There were two heavy gates, whose demolition I regret.

The territory between Okato and Opunake was closed to the pakeha, being held by the Chief Tohu and the Prophet Te Whiti and the Maoris, although in the 1860s the Imperial Army marched through and the said territory was confiscated. Prior to that a Methodist missionary, Rev C.H. Schnakenberg, was

stationed at Warea, and Te Whiti, as a boy, lived with the missionary and was taught to read the Bible in the Maori language, and continued to be a great Biblical scholar, right through his career as witnessed by myself from time to time.

But the Imperial War did away with all missionary work on the coast. In 1880 the Atkinson Government decided to open up this territory for settlement and stationed 300 Armed Constabulary at Opunake and 300 at Okato. In May, 1880, we entered the territory from each end and started surveying and forming the present main road, sentries being

stationed each side to protect workmen, who also had their arms and ammunition piled near where they were working. Our camp from the Opunake end was Opua, then Kaikahu (near Maxwell's), then Pukehinu at back of Mr W.R.Wright's farm. Of course those farms did not come into existence until after 1882. At this last camp we met the Okato contingent near Pungarehu, where a little brush with the Maoris took place (contrary to Te Whiti's orders) and those Maoris were taken prisoners and sent to Dunedin, where they were well treated.

At this juncture the Hon.

Continued on page 7.

W.O.F. Mechanical Services Engine Services
 General Repairs Dashboard warnings
 Diagnostics Punctures
 Batteries Floats 2 +
 4 Wheelers Contracting
 Equipments Mowers
 Trailers Towing Heavy
 machinery Mechanical
 Pipework repairs
 Services Engine Repairs
 Dashboard warnings
 Punctures New Tyres
 4 Wheelers Contracting
 Equipments Mowers
 Heavy machinery Fabrication

AUTOMOTIVE + ENGINEERING
 1759 South Road TATARAIMAKA
 027 4416 330 752 4933 www.thegaragejsme.co.nz

Garage Doors Specialists

WINDOWS • DOORS • CONSERVATORIES

- Sectional, Roller, Tilt.
- Automatic Openers
- Repairs & Maintenance

Call for a Free Measure & Quote
 Email: sales@rylocknp.co.nz | Ph. 06 758 8073

HARDINGS FUNERALS

The funeral service doing things your way.

Professional Service : Positive Support

Give us a call: 06 278 8633

Locally owned. Locally operated.

HARDINGS FUNERALS



Mr and Mrs Hughson on the left outside their store.

POWERWORX

Power Supply Rural & Residential

Design, upgrade and repair overhead and underground power supplies

- Powerco Approved
- Underbores - wires and pipes
- Powerline maintenance
- Fault repair
- Subdivision power installation
- Vegetation control around powerlines
- Network connections
- Transformer & line upgrades
- Specialists in rural power servicing and installation

0800 877 746

Taranaki Region
 Contact Bruce Wilson Manager
 58 Glover Road, Hawera Ph: 06 278 4514
 Email: powerworx@obertech.co.nz

WATER BLAST CLEAN YOUR TROUGHS

FROM \$25 + GST PER TROUGH

Fully insured.
 Health and Safety/
 Hazardous Substances certified.

Phone or text to book your clean today.

CLEAN TROUGHS = HAPPY COWS = HAPPY FARMERS

Ph/Text 021 207 3992
 spiffysanitising@gmail.com

Historical sketch of West Coast Taranaki Methodist Mission

Continued from page 6.

John Bryce M.P., the Native Minister intended to march on Parihaka with the 600 ACs, but on submitting the proposal to Cabinet they turned it down, considering that such might cause another Maori war. Mr Bryce therefore resigned his portfolio and the Hon. W. Rolleston, M.P. for Christchurch, was appointed Native Minister. He moved us A.C.s about to Warea, Cape Egmont, to make ready and guard the spot for the light horse, then to Rahotu. At the end of twelve months he advised Cabinet that the only solution to the Maori difficulty was Mr Bryce's idea and that he should resign and Mr Bryce be re-appointed. He refused unless the volunteers were called out to the number of 2000, including the A.C.s, as the Maoris now knew his intentions. This therefore was done and volunteers from north and south including Blenheim, came along, eventuating in our march on Parihaka in October 1881. First we arrested a Maori murderer (Heroki), who had been protected in this outlawed territory for some years. He was taken to New Plymouth, tried and hanged. Then Te Whiti and Tohu were taken political prisoners and sent to Nelson, being provided with a nice villa and servants to wait on them. They were kept there for three years, during which time I, with No.3 Company was stationed at Parihaka.

In 1882 the "West Coast Settlement Reserves Act" was passed, the survey having been completed, when a great rush of settlement took place in Opunake and the new district, great building of shops, hotels, houses, auctioneering establishments, etc., in Opunake. A portion of the farmland was sold for cash on the sea side of the road, but the inland farms were let on behalf of the Maori owners on a 30 years' term,



The Hughsons Building at Rahotu today.

with a 5 pound allowance for improvements at the end of the lease. The 1892 Act provided for other leases on a 21 years' period with right of renewal and full compensation for improvements, the Native Trustee collecting and distributing the rents.

In 1911, a committee was formed (of which I was chairman) to approach the Government re amending the W.C.S.R Act, which resulted in an extension of the 1882 leases for ten years at a new valuation, minus the five pounds improvements, but full compensation for all improvements at the end of the 10 years or permission to purchase, with the Maori owners' consent, also the lessees to have the same purchasing at a fresh valuation. Sufficient reserves were kept and provided for Maori.

About the end of 1884 the Parihaka camp was broken up and we shifted to Opunake. The one policeman policy was adopted. Hickman, our small mounted man was appointed and stationed first at Pungarehu and later at Opunake.

Prior to this we had very little spiritual duty outside the church parade on Sunday mornings, when the officer read from the Church of England prayer book. But

after that Opunake was booming, a Methodist Home Missionary was sent and stationed at Opunake, a personage being secured, A Mr. Young did faithful service holding meetings and Sunday School in the public school, baptising Anglicans, Presbyterians, etc. Then Mr. John Guy, local preacher, also did faithful work and later arranged for the present church to be built. Methodists were the first to take up the work, and later the Presbyterians and Anglicans followed. I had the pleasure of assisting in the Sunday School.

At this juncture a little personal experience may not be out of place. My intended wife, who was a fellow-passenger from England in 1879-80, was at service in Blenheim with a faithful Methodist family and there was converted under the ministry of Rev. D. McNicol. On the return of the volunteers from Parihaka they brought a rather dark picture of the A.C. Christian morale. And she, being sincerely impressed with St. Paul's advice, "Be ye not unequally yoked with unbelievers," wrote to me terminating the engagement. As no reason was stated, I decided to ask for a fortnight's leave and proceeded to Blenheim to

see what was the matter. I was confronted with the question, "Are you really converted?" I then felt there was something wanting and went to my hotel with the book she gave me, "The Life and Letters of Rev. Murray McCheyne." I passed the night in study and prayer and the light came and I was able to realise what true conversion meant. When I returned home, before going back to camp, I was constrained to join in prayer at family worship, and I shall ever remember mother's tears of thanksgiving at the answer to her prayers, which prayers I was able to recognise had saved me from the temptations surrounding my young life. My intended was prepared to forsake all for Christ's sake, and Christ's promise of a hundredfold has been fulfilled in our life.

In July, 1885, we were united in matrimony in Whitley Church, and after a short time in Auckland we came back and settled on the farm at Okato. Here

we found that services were carried on from New Plymouth by Primitive Methodists and Anglicans on alternate Sundays in the public school. We therefore decided to start a Sunday School and Mr Wm. Andrews and Miss Eustace (who as Mrs. Shepherd, died in Opunake, May 22nd, 1943), assisted us and this grew to large dimensions, and I thank God for the testimony of some for the benefit received for themselves and their families. Our attendance at services was very small and when Rev. J. Nixon came from New Plymouth in his first appointment to Okato he arrived on horseback, as all had to do in those days, and with his tall hat and long black coat and looking rather sickly, we wondered how he would get on. But at the service he said, "Now brethren and sisters, I understand our congregations are very small and it is a long way to come. Would you like us to withdraw and leave the services to the Anglicans?"

But we said that would be going backwards. Then Mr. Nixon, when appointed, would come out on the Friday and visit all round before the service, which resulted in a short time in a full congregation. But later the P.M. quarterly meeting objected to putting in so much time at Okato, and they decided to appoint a young man from England to reside at Okato; but this young man proved unsuitable and congregations went right down, and New Plymouth, being responsible, called on us to find his stipend which the three or four of us could not do, the price of produce being very low. Then Mr. Nixon wanted to take it up as before, but the quarterly meeting refused and he withdrew entirely, and at the same time the Anglican clergyman got too old and was withdrawn, so we had no services at all. Then Messrs Andrews, Eustace, Ashley and I consulted together and decided that I should approach the Wesleyans at Whitley to undertake the work as they had a good staff of local preachers. I therefore saw Rev. P. W. Fairclough, who stated that an agreement between the P.M.s and Wesleyans was that south of New Plymouth was for the P.M.s and North Wesleyan, and although the P.M.s had broken that agreement it was no reason for the Wesleyans to break it. But I said, providing I get the P.M. consent in writing, how then? He said it would be considered if we agreed to find 150 pounds. This I said we could not do. But later the local preachers in New Plymouth decided to undertake the matter and work at Okato Tatra and Warea; and for some years

Continued on page 14

BRANDERSON HOMES LTD



TRANSPORTABLE HOMES

Office, Show Room & Workshop located at
47 Hautapu Road, Cambridge

branderson.homes@xtra.co.nz
www.brandersonhomes.co.nz
07 827 3901



Taranaki owned and operated

We create all types of new memorial work and restorations, including second inscriptions, repainting and cleaning existing memorials.

We also specialise in unique stone works for special projects.

TINY AUSTIN
021 663 199
tiny@headstonestaranaki.co.nz

The best tests for this Delta outbreak

The place of testing in our current Covid-19 response has been widely discussed this week – but which tests are best at this stage of the outbreak: PCR or rapid antigen? Saliva or nasal swab?

Associate Professor James Ussher of the



Is this the optimal test for Covid?

University of Otago, who is also a Consultant Clinical Microbiologist for Southern Community Laboratories, said PCR tests were still the test of choice as New Zealand tries to regain its elimination status.

He said he didn't see a "huge role" for rapid antigen tests at the moment, as they were less sensitive than PCR testing, even at the acute stages of infection.

"We currently have zero tolerance for missing an infection," he said.

Saliva PCR testing also had a role for surveillance. However, he said nasal swabs were still the preferred method since research showed they were the same or even slightly more sensitive than spit tests.

Time was also a factor: nasal

swabs were quick and easy to collect, where saliva testing took a couple of minutes.

"For patients who are symptomatic or have been at a location of interest, where the testing is high-stakes, you would want saliva collection observed to make sure that

an appropriate volume of sample was collected and that the person had not been eating, drinking, or smoking in the half hour prior to collection."

Looking overseas, Associate Professor Ussher said it was important to recognise that New Zealand was in a very different place than most other countries when it came to our testing needs as we're seeking to return to our elimination status. That meant using the most sensitive tests to pick up every case.

However, when we get to a place where we re-open our borders and accept community transmission of the virus, there would be a greater role for rapid antigen tests and saliva PCR testing. "There's a lot of experience being developed with these sorts of surveillance methods overseas that'll be critical for us to learn from as we move past an elimination strategy. I think we're in a fortunate position that we can learn from much of what's occurred overseas."

Eltham

Farm Supplies

INDEPENDENTLY & LOCALLY OWNED

Mon-Fri: 8am-5pm
Sat: 9am-12pm

✉ farmsupplies@elthamtimber.co.nz

☎ 06 764 7003

📍 178 Bridge Street, Eltham





CHECK OUT OUR WEBSITE:

www.andersonspies.co.nz

OPENING HOURS

MONDAY - FRIDAY 6AM - 5PM

PH 06 278 5553 - FAX 06 278 5182

sales@andersonspies.co.nz

142 Princes St
HAWERA

"best you can buy
an Andersons pie"

Thank you to the health professionals, essential workers and volunteers who have supported our communities through Alert Level 4 and 3.

Now it is time to do our part by shopping local, showing patience and kindness with one another, and following Alert Level 2 rules.

The best way to protect yourself and your loved ones is to get vaccinated. Everyone over the age of 12 is able to book their vaccine appointment now at bookmyvaccine.govt.nz.

Together, we can stamp out COVID once more.

For the latest information, visit covid19.govt.nz.



Steph Lewis MP for Whanganui
Steph.LewisMP@parliament.govt.nz



Labour

Glen Bennett MP for New Plymouth
glen.bennettmp@parliament.govt.nz

Authorised by Glen Bennett MP, Steph Lewis MP, Parliament Buildings, Wellington, New Zealand

Waste to energy proposal slammed

Greenpeace Aotearoa say they oppose a new proposal to build a waste to energy incinerator in Waimate to burn 350,000 tonnes of plastic, toxic sludge, nappies and other waste..

"There is nothing right about this nightmarish proposal. It would be a disaster for public health, for the climate and for efforts to reduce waste," says Greenpeace Aotearoa plastics campaigner Juressa Lee.

A similar proposal in Sydney recently met strong community opposition and has been rejected.. Greenpeace Aotearoa is calling on the Waimate community and Council to do the same.

"If the Waimate community voices its opposition, I have no doubt that this abhorrent house of cards will fall. It doesn't stack up environmentally, morally or economically.

"The incineration process would pose a serious threat to public health in

the Waimate community. Similar plants elsewhere have been shown to be more polluting than coal, emitting dioxins, mercury, lead, nitrogen oxide and more.

"Carbon emissions would be created from burning the waste feedstock and from the fuel required to incinerate waste, as well as from the transporting of waste from all over the South Island to the plant in Waimate.

"On top of all the pollution issues, the whole waste to energy incineration concept undermines the very pressing efforts to reduce waste in Aotearoa because it requires rubbish to operate, thus incentivising waste production.

"At a time when the world is awash with plastic pollution, we need to be focused on shifting to a circular economy where there is no waste, not falling for false solutions like waste to energy incineration or more recycling schemes.

Greenpeace Aotearoa say

they have been lukewarm about the Government's recent promise to phase out some single-use plastics, pointing out that the plan fails to tackle the worst culprits; single-use plastic bottles.

A Greenpeace petition calling for single-use plastic bottles has been signed by over 85,000 people.

"As we face the existential risk of the climate crisis, we must not allow the oil industry its plastic lifeline. Single-use plastic is itself a major driver of climate change and is harmful to human health, even when it's recycled. A new report, released by Greenpeace USA reveals that the big players in the consumer goods sector like Coca-Cola, Pepsi, are driving the expansion of plastic production. And by doing so, are threatening the global climate and the health and safety of communities around the world," says Juressa.



Opunake Constituent Clinic with Glen Bennett

Coastal Care, 26 Napier Street, Opunake
Saturday 25 September 2021
10:00am - 12pm

By appointment only
To book a time, please call (06) 757 5662

Glen Bennett
MP for New Plymouth



Labour

Authorised by Glen Bennett Parliament Buildings, Wellington

Memories of Max

Max Cryer was one of those people who seemed to be around for as long as most people could remember. He was an integral part of the burgeoning New Zealand TV scene from the 1960s, and in later years reinvented himself as a wordsmith and expert on the origins of words and every day phrases.

He was New Zealand Entertainer of the Year in 1974, and his entertainment work overseas meant he rubbed shoulders with the great and the good.

He was awarded an MBE, but in reality the honour he deserved was a much higher one.

Although he had one of the most familiar faces and voices in the country he remained something of an enigma. There was never any mention about a wife, partner or children, or about his private life.

He remained a closed book until the day he died on August 25, much to the frustration of obituarists or potential biographers.

I first met Max back in 1982 when I was a student at Massey University studying for a BA(Hons) in History, and I was a member of the four person team representing Massey University in the popular TV quiz programme University Challenge.

Some obituaries written about Max have incorrectly stated that Max fronted this show as well as Mastermind, another quiz show which had also adapted a successful British format to New Zealand conditions. This was incorrect. Both were fronted by the late great Peter Sinclair. Max was the producer of both shows. While the show's director would be involved only for the duration of the filming, Max as producer would be there from start to finish.

University Challenge was filmed in Dunedin, with all the teams staying at Arana Hall student hostel. Max drummed the message into all of us that we were not there to win the title for our universities but to make good television.

Our team won that year,

the first and only time that Massey had achieved that feat.

A year later I was back in Taranaki working for the Taranaki Catchment Commission (now the Taranaki Regional Council). I decided to have a crack at Mastermind, choosing as my specialist subject New Zealand Party Politics since 1945.

Max was touring the country meeting the potential contestants, all 200 or so of them who were vying for 32 slots in that year's show. I met him at the Radio Taranaki offices in Hawera and he gave me a set of questions on general knowledge and my specialist subject. I remember the occasional gasp of exasperation from him at me muffing answers to what he obviously considered basic questions. It was with some surprise then that I later got

a letter inviting me to be on the show.

I managed to win my heat which got me through to the semifinal, and later the final where I finished third.

Three years later I was living in Wellington and waiting to catch a plane at Wellington Airport when who should I run into but Big Max. He greeted me warmly and invited me to stop for a chat. He made the suggestion I should have a go at writing the Quiz Book of New Zealand Politics. He said that if I did he would write a foreword.

I took up his suggestion, and Big Max was as good as his word and sent me a foreword. Unfortunately I wasn't able to find a publisher and there the story ended. It was also the last time I saw Max.

Max Cryer you were a class act and a gentleman. You will be sadly missed.

Bryan Kirk.



Max Cryer.






GET READY FOR THE SEASON AHEAD WITH A QUALITY MOWER

NEW PLYMOUTH	HAWERA
65 KATERE ROAD	16 GLOVER ROAD

South Taranaki:
Raymond - 027 444 8861

North Taranaki:
Paul - 027 498 7277



... and proud of it







OPUNAKE & COASTAL NEWS

LIKE ONE OF OUR PHOTOS?

Did you know that photos that are published in our paper are available to purchase?

Call in and see us today.

Ph/Fax: 06 761 7016 - 23 Napier Street, Opunake
or e-mail us: ads@opunakecoastalnews.co.nz

Prices from:
Postcard size \$7 - Medium size \$10 - A4 size \$18



If the chatter around your place has been "will we sell?" or "shall we wait?," then jump off the fence and be part of Bayleys' next Country portfolio - there's no time like the present to secure your future.

Planning for the eagerly-awaited Spring edition of Country is underway now.

Bayleys' Country portfolio has given owners of rural New Zealand property the opportunity to access motivated and serious buyers for over 21 years.

Our rural and lifestyle sales team is hard-wired to do the ground work for you - that's why Bayleys is recognised as New Zealand's number one rural real estate brand.

To learn more about Country magazine, Bayleys Taranaki 06 759 0415 or visit bayleys.co.nz/country

SUCCESS REALTY TARANAKI LIMITED, BAYLEYS, LICENSED UNDER THE REA ACT 2008





Woodward's FIREWOOD

Animal Bedding For Stand Off Pads Calf and Goat Sheds Wintering Barns

- Untreated ground up waste wood —
- Raw material stockpiled then ground to order —
- Pick up or delivered to your farm —
- 9m³ truck loads —
- 65m³ truck loads —

06 755 2047

124 De Havilland Drive, Bell Block • office@woodwardsfirewood.co.nz
www.woodwardsfirewood.co.nz



ALTOGETHER BETTER

Residential / Commercial / Rural / Property Services

Students graduate and become global citizens

Taranaki students from Hāwera High School, Francis Douglas Memorial College, and Spotswood College have completed Education New Zealand's Global Competence Certificate (NZGCC) and have had an online graduation with students from Thailand and Vietnam.

The NZGCC is a research-backed certification which teaches cultural self-awareness, empathy for other cultures, and ways to connect in multicultural settings. The course which comprises 18 online modules and four live and facilitated dialogue

sessions, over a four week period, is facilitated by Massey University tutors.

The NZGCC, originally designed by AFS Intercultural Programs, aims to develop active global citizens and empower young people from all backgrounds with essential global skills and instil a passion to make a difference.

“Venture Taranaki is proud to have supported 15 students across three differing high schools to complete this certificate. The future of work is becoming increasingly multi-cultural and global; having cultural



Catherine Reilly-Leadbetter a Year 10 student at Spotswood College is set to graduate this weekend and has gained a lot from the course

competency skills will be important for our young people as they enter the workforce,” says Vicki Fairley, Venture Taranaki General Manager, People and Place.

Over the four weeks students covered topics such as stereotypes, empathy, dealing with conflict, and resilience. Local students also engaged and connected with students from Thailand and Vietnam through online discussion forums and live discussion groups.

Catherine Reilly-Leadbetter a year 10 student at Spotswood College says she has gained a lot from the course.

“My teacher told me about it, and it sounded exciting to learn about different cultures, so I signed up. We learnt a whole range of skills for interacting and communicating with people from other cultures. My favourite modules were ‘withholding judgement’ and ‘communication styles’ because I learnt a lot about how what you say can be interpreted differently to how you meant it and how to hold back from making assumptions when meeting people which I think is an important skill,” explains Catherine.

This is the first year Taranaki students have been

involved. And although the three countries involved have been in lockdown they have worked through the programme and have managed to have a meaningful experience.

“I made a few new friends, Clarence, from New Zealand, although living in the same country, had a completely different experience and we were able to connect and talk about current events happening here. I also made a few friends from Vietnam and Thailand, one of the girls talked to me about her parents and how the government system works there, and I found it really interesting,” continues

Catherine. “I would definitely recommend this to others. The skills I learnt in the course have massively changed my perspective and allowed me to be more open minded, empathetic, and kind to others.”

“While navigating the challenges of lockdowns it’s fantastic these students were still able to make global connections, challenge their pre-existing perceptions, and gain valuable skills they can put into action right away while also setting themselves up for the future. The core elements of the course are also of course applicable to any situation, in terms of how we communicate and interact with our diverse society,” continues Vicki.

“Educating more young people to become global citizens is crucial if we want to create a more just and peaceful world. At AFS we are committed to ensuring that everyone has access to intercultural learning where learners gain skills such as cross-cultural communication, empathy, and conflict resolution to learn how to effectively bridge differences. New Zealand is truly demonstrating their commitment to global engagement to help prepare the next generation of global citizens,” says Daniel Obst, President and CEO of AFS Intercultural Programs.

“Research conducted by Education New Zealand (ENZ) shows that enterprises in New Zealand who employed staff with cross-cultural competencies found this contributed to a more energising workplace, which helped to foster creativity and innovation. We are sure our Taranaki students will go forth and use their newly gained knowledge to better their whānau, community Aotearoa and beyond,” concludes Vicki.

On this month in history

Chilean Coup

On September 11, 1973 help from the United States leadership, staged a coup d’etat in Chile. The democratically elected leader Salvatore Allende and his socialist government was overthrown and President Allende was also murdered.

The military junta ruled for 17 years and many Chilean people were imprisoned, tortured and murdered. Students and trade unionist were especially targeted.

In 2005 General Pinochet from stripped of immunity to face tax fraud charges. The tyrant had accumulated millions of dollars in secret bank accounts.

Ironically, Pinochet claimed to be a Christian and attended Roman Catholic services



SCHURR IRELAND
CHARTERED ACCOUNTANTS

NEW PLYMOUTH **ELTHAM**
p. 06 759 0105 p. 06 764 8305

www.schurrireland.co.nz



ELTHAM
BUILDING SUPPLIES

Cabinet Making, Glass Supplies & Custom Joinery Solutions

Donald & Ian Murray

☎ 06 764 8616 📱 027 242 8379
027 348 9445

136 High Street, Eltham
eltham.bs@gmail.com
www.elthambuildingsuppliers.co.nz



Dave’s available for all farm maintenance digging and all landscaping work.

S.O.S
Specialist Outdoor Services

call 027 605 8437
31 King Street - Opunake

Club Hotel RESTAURANT, BARS, TAB, GAMING LOUNGE, BOTTLE STORE, ACCOMMODATION



Happy Hours
Sun, Mon, Thurs
4pm-7pm

100 TASMAN ST, OPUNAKE - PH 06 761 8213
email: clubhotel.opunake@gmail.com

Getting to the heart of the matter

Heartland Construction, HCL Ltd has a new project manager with Toby Watt promoted to the position.

Toby, who is a qualified tradesman, joined Heartland in April this year. He has replaced Doug Gibson who has sadly passed away recently.

Toby, who grew up in Opunake, did his building apprenticeship in New Plymouth. After graduating he moved to Australia spending time in north Queensland working in an aboriginal community before moving further south to the Gold Coast.

He missed home however and returned after a year. "Coming from little Opunake you realise how good it was in the township," he said.

He began by setting up in

business as a self-employed builder and comments candidly he found it tough, "The stress of finding work."

When Doug unfortunately left, due to illness, Toby decided he'd prefer to work for a company that had steady work and a good name.

He meanwhile had also embarked on further study beginning a draftsman course which he's also completing.

"I wanted to get more into the design aspect of the work," Toby says and is continuing to complete the qualification.

As project manager part of his work involves pricing jobs out and working with others at Heartland which has eight staff.

Toby says he loves what he's doing and adds, "It's

definitely a challenge."

Doug left big boots to fill, however Toby acknowledges he's still learning on the job.

"Doug was a huge loss to the company. He'd been in the building industry for so many years and had so much knowledge."

In his spare time Toby is a keen surfer.

Heartland do anything from alterations of houses to new builds including cowsheds.

If anyone needs a job priced come in and see Toby who is based at the Heartland on the corner of Allison Street and Whitcombe Road most days from 9am till 5pm.

Phil Brophy the owner of Heartland said he wanted to pay a special tribute to Doug. Phil bought what was then Kuriger Builders in 2013, which Doug had managed



Toby Watt. Project Manager at Heartland Construction.

for 16 years ago after the founder Conrad Kuriger moved to Tauranga. When

Phil bought the business (with Tom Hopwood) Doug stayed on working for Phil.

"He was a big part of the business and it was a big loss."

Gardening with Palmers Gardening Centre



Top tips for strawberries



There is not a fruit that captures the essence of summer better than strawberries. Whether they spill out of strawberry towers, tumble from hanging baskets, troughs and containers or share a spot in the flower or vegetable garden.

Plant in a sunny area

You will get the best flavour from strawberries that are planted in a sunny spot. Give them some space

Strawberries like to have room so give them at least 30cm of depth in the soil and

at least 40cm between each row of plants.

Don't drown the strawberries

Strawberries don't like to be waterlogged so ensure your soil drains well. Planting strawberries in small mounds will help prevent the soil from becoming too damp.

Pick the flowers

Pick the first flowers that come on your strawberry plants as this will promote better growth.

Feed when the flowers appear, this is the crucial stage where the plant will require the energy to focus on producing healthy fruit. A complete fertiliser high in potash will be the most effective.

Remove the runners

Runners are off-shoots of the strawberry plant. A young strawberry plant will



not fruit as well if the runners aren't removed as they use up too much energy.

Plant a variety

It's a great idea to have strawberry plants with different fruiting habits. The best time to pick your strawberries is just before they ripen. Leaving them too long on the plant will only give pests a greater opportunity to get to them

first.

Make sure there's enough to go around

Everyone loves strawberries, so to make sure there are enough for everyone we recommend planting around five plants per person. This will ensure you're getting juicy berries all summer long.



Palmers knows plants

At Palmers, you'll find a Garden Centre full of passionate gardeners who are ready to share the joy of good living with you. We are all about creating beautiful spaces, at our place and at yours. We're locally owned and operated, packed with quality products and expert advice for your home and garden.



CAFÉ BOTANNIX

The ideal setting to stop in for a delicious meal, made in-house with seasonal garden produce. Our tranquil garden setting and covered outdoor courtyard is the perfect place to relax after meandering through the garden centre.

Cnr Katere and Devon Rd, Fitzroy, New Plymouth. Ph: 06 758 7455. Open 7 days from 8.30am.



NURSERYRHYME
 HAWERA'S OWN BABY BOUTIQUE
 PREM-6YRS
 CALL IN AND SEE
 OUR EXTENSIVE RANGE

NurseryRhyme Ltd

158 High St, Hawera
 06 278 8035 • OPEN Mon-Sat
 Follow us on Facebook

INGLEWOOD TIMBER PROCESSORS LTD.
 41 Cutfield Street, Inglewood.
 Contact Mark on (06)756 8803 or
 itpltd@xtra.co.nz

ITP
 INGLEWOOD TIMBER
 SHAVINGS

All our wood products are untreated and kiln dried. This means our baled shavings are ideal for use with animals, or where a clean, pure product is essential.

Dimensions: 1200x700x700
 Weight: 120kg per bail (approx.)

Early orders essential over winter.

The heat is on!

SAVVY GAS
 PLUMBING AND DRAINAGE

OUR SERVICES
 SERVICING NEW PLYMOUTH AND TARANAKI WIDE

- HOME HEATING • DRAINAGE • PLUMBING
- ROOFING • GAS FITTING

Any job, we will get it done on time in budget

Call Us 06 765 5336
 Email Us info@savvygas.co.nz
 www.savvygas.co.nz

Master Plumbers
 Representing Excellence
100% LOCALLY OWNED & OPERATED

Hawera businesses join forces to help community

It just got a little bit easier for the mobility-challenged to get around South Taranaki.

Locally owned Hawera business South Taranaki Funeral Services has teamed up with Mobility and More to develop their new free mobility scooter short-term loan project.

“We know how hard it is to have a family member in palliative care, living with limited mobility, injury and/or experiencing tough times



Margaret Robynson-Davies

so we’re doing what we can to make those times a little easier for our community,” says Glenn Rogers, South Taranaki Funeral Services owner/operator.

“The short-term use and loan of these mobility scooters must be requested through GPs and support agencies including Lions, GreyPower etc. and recipients will meet a specific “need criteria.” To find out more, email glenn.rogers@stfs.co.nz or pop in and see Glenn at South Taranaki Funeral Services.

Glenn says this project is the perfect way for these two businesses to honour the memory of his friend and supporter, Margaret Robynson-Davies.

“Margaret was a friend to everyone she met, and she gave everything she could to help those in need. She was a volunteer for Hospice for over 20 years as well as the Cancer Society, a regular Mrs Claus volunteer and a beautiful soul. She was our Aunt Margaret. I wanted to find a way to do something good in our community and in her memory.

“We’ve named one of our two scooters ‘Margaret’



John Challoner and Noreen Willing popped down to South Taranaki Funeral Services to test out the short-term loan mobility scooters freely supplied by South Taranaki Funeral Services and Mobility & More. Glenn Rogers (back left) and Kevin Bromell (back right) are delighted to be able to offer these to the South Taranaki Community.

and it carries her signature butterfly trademark. Margaret always loved butterflies.”

When Mobility and More owner/operator Kevin Bromell supplied a new wheelchair to the funeral home and heard about Glenn’s plan, he offered to

join in the effort by keeping the scooters mobile and in good condition.

“It’s a matter of helping people and supporting the community,” Kevin says. “That’s why I’m in this business and proud to be part of this project.”

These two scooters are

specifically for short-term use only as Kevin already has generous long-term hire and purchase options available.

For a longer term option, or assistance with mobility aids of all kinds contact Kevin mobilityandmore@xtra.co.nz.

gibsonplumbing LTD.

CERTIFIED

Plumbing, Gasfitting and Drain Laying

Plus! Roofing, Wood Fires and other Heating Solutions

06 761 8757 027 445 7164
gibson.plumbing@xtra.co.nz

MOBILITY & MORE 2010 LTD
0800 765 763
TARANAKI WIDE SALES & SERVICE

Taranaki wide sales, hire and service. Free delivery, competitive prices.

MOBILITY SCOOTERS and all living aids - we'll help you with whatever you need.

Kevin & Marilyn Bromell
154 PRINCES ST - HAWERA
Ph: 06 278 8072 - Freephone 0800 765 763
www.mobilityandmore.co.nz

Don't leave them Wondering...

Plan Ahead Today



SOUTH TARANAKI FUNERAL SERVICES
Ph: 06 2788 088

Mike Burr's thoughts on Titokowaru

The article the ‘News’ ran on Mike Burr’s ‘An End of Honour—a novel of Titokowaru’s War’ sparked so much interest and so many queries we decided to interview Mike on the background to the work. We asked three main questions and here are his replies.

What’s the source of your fascination with Titokowaru?

In the mid-80s I was teaching History at Rotorua Boys’ High and working part-time on a master’s degree. Part of that was a



Author Mike Burr.

thesis, and my topic was the service to the Crown in

peace and war of the Arawa Confederation. While I was

working on the Land Wars chapter the school holidays occurred and when I found myself in New Plymouth visiting in-laws. One rainy day I took myself off to the then Taranaki Museum to see if its microfilm archives contained any mention of the Arawa Flying Column operating in Taranaki.

What I did find was a character known to the papers of the time as ‘Tito-Kowaru,’ and I was quite miffed that I knew nothing about him whatever. There I was, researching the Land

continued page 13

Stratford

Knit and Sew

Haberdashery, quilting materials and supplies. Wool, patterns and needles. Embroidery and cotton.

Open:
10am-4pm Mon-Friday
10am-12pm Saturday

Phone: 06 765 4181
202 Broadway, Stratford
www.stratfordknitandsew.com

POWERLINE FAULTS AND SERVICING

From a fuse or broken insulator replaced to a complete powerline rebuild

Call: **TOP OF THE LINE ELECTRICITY SERVICES**

Greg Lewis: 027 453 0326
Justin Robinson: 027 445 9162

Powerline Servicing Specialists
Free line inspections
Free advice | Free quotes

Mike Burr's thoughts on Titokowaru

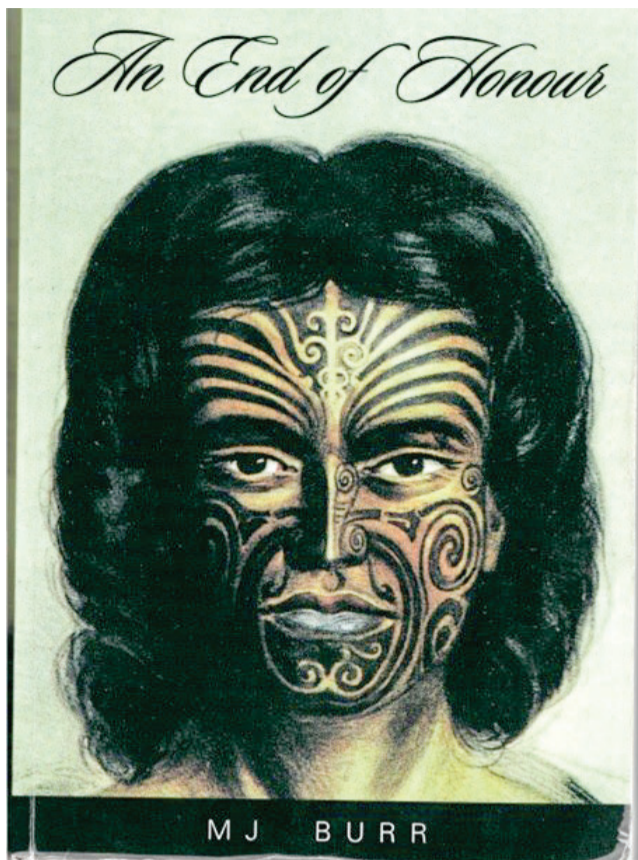
continued from page 12

Wars and I had apparently missed a major player. We'll come back to the reason for that, but I decided to get the thesis out of the way before restoring my damaged pride by reading as much as I could about this mystery man.

During the years I did so, he wouldn't leave my head and in the meantime I came to wonder at and admire the man and his achievements more and more. When my career brought us home for the second time—I'm the only member of my family not born under the mountain—I looked forward to being at last 'on the ground' where I had the best chance of paying my homage to a truly great New Zealander and the man whom James Belich hails as 'arguably New Zealand's greatest general'. Writing the book, and especially the pun in the title, was nothing less than a work of catharsis for me and in many ways it actually wrote itself.

Why, in your view, is he so little-known?

I'm not the first to discover this, but I agree wholeheartedly with James Belich who, after finding that his first year class at VUW had never heard of Titokowaru either, concluded that he had been deliberately written out of the record. Why? In a word, because he so nearly succeeded in emptying the 'Aotea Canoe'—South Taranaki and Wanganui—of settlers by thrashing every colonist army sent against him and taking down some of our best-known soldiers such as Thomas MacDonnell, George Whitmore and Gustavus von Tempsky in the process. Let's never forget that, in a quote attributed to Winston Churchill, 'History is written by the victors'



Front cover of the book.

and Titokowaru went much beyond mere bogeyman to a chilling nightmare that came perilously close to reality.

The reason for that lay in his motivation. Titokowaru's strategy was always clear and always absolute—to preserve the lands that gave his people life and sustenance, and all the tactics he adopted to achieve that were rooted in that strategy.

A comparison makes the point: where the motivation of his great contemporary, Te Kooti Rikirangi, sprang from his personal and appalling mistreatment by the white man and led to some ferocious rampages up and down the East Coast, he was never in Titokowaru's class as a strategist because, like England's Hereward the Wake nearly a thousand years before, his motivation didn't go beyond revenge. The colonial government clearly recognised this when they pulled General George Whitmore away

from a bleeding West Coast in order to settle Te Kooti before returning to confront the greater problem.

Why should he be remembered in our history?

Outstanding as he was as a strategist, tactician, field engineer and commander of men in action, Titokowaru was more than a soldier. He set aside the conventions of his culture in refusing the moko because he held that the white man would never take a tattooed face seriously. He was a lay preacher with a sounder grasp of the Scriptures than any Pakeha had of the animist religions of Maori and, in short, his commitment to what would today be termed biculturalism transcends any and all race labels. This is the source of my description of him as a truly great New Zealander.

Most of all, however, he was a freedom fighter of the same ilk as his

contemporary, Sitting Bull, and for the same reason: the white man wouldn't leave him alone.

But why is his contribution important?

Well, just over seven hundred years ago, the army of Scotland under Robert the Bruce took on an English force led by Edward II that was more than four times its size and incomparably better-armed. In the words of the unofficial Scottish national anthem 'Flower of Scotland' they "sent (Proud Edward) homeward; to think again." Titokowaru did no less in four pitched battles and a multitude of smaller engagements, but that was much less than seven centuries ago, and as yet we do not sing the songs of Titokowaru. Why not? And if we can't sing them here, where can they be sung?

This man of peace who became an outstanding soldier because he was forced to, then ended his days working at Parihaka in the ways of peace that had always been his preference surely deserves better.

If you'd like a copy of *An End of Honour - a novel of Titokowaru's War* email Mike at info@cliowrite.com or phone 06 752 7501

GET YOUR LAWNMOWER & CHAINSAWS SERVICED HERE!
We service all types of LAWNMOWERS, BIKES, CHAINSAWS & RODS & REELS

STARTING PROBLEMS? NOT ANY MORE...

HP AND LAYBY AVAILABLE

Whitebait nets in stock.
30% off waders when purchased with a net.
20% off waders in store

SYMES OUTDOOR & SPORTS LTD
Tasman St, Opunake | Ph 06 761 8778

EZI-SPOT 50L QUAD-PRO ATV Sprayer, "Smoothflo" 6.8 L.p.m. 107 p.s.i.
WAS \$980 + gst
NOW \$800 + gst
For a limited time only

BA K Pistol, Heavy Duty w Swivel & Hosetail

BA PUMPS & SPRAYERS

South Taranaki:
Raymond - 027 444 8861

North Taranaki:
Paul - 027 498 7277

TransAg Centre (2014) Ltd.
AGRICULTURE
... and proud of it

CASE II AGRICULTURE | **KUHN** | **KRONE** THE POWER OF GREEN UK

Lifestyle Properties Wanted!

Are you considering selling or just want to know what your property is worth?

Contact me today for your complimentary appraisal!

Michelle Hofmans
M 027 531 7684
E michelle@fntaranaki.co.nz

firstnational REAL ESTATE Collective®
Licensed REAA 2008

Peter Kuriger Engineering & Concrete

We Repair Farm and Contracting Machinery - Hydraulic Rams Diggers and all Buckets - Tip Trailers - Quarry Equipment and undertake General Maintenance - plus Stainless Welding

Need Concrete? troughs, culvert pipes and lids, bridge decks, box culverts and bases, inspection pipes and much more....call us.

889 Upper Kaweora Road - Opunake 0274 526 718 - 06 761 8122





The homestead at Rahotu where the Hughsons raised ten children still stands.

Historical sketch of West Coast Taranaki Methodist Mission

Continued from page 7

remembered. But I desire to note that the mortgages on churches and parsonages were duly paid, and we cut out our request for Home Mission grant as soon as possible. We had a grant for a few years and we are thankful for the help, and thank God for His guidance and help.

I was appointed vice-president of Conference in 1929 in conjunction with Rev. J.F. Goldie, as President. I was also appointed a Justice of the Peace in 1908, and passed my local preacher's exam in 1901 in conjunction with Mr. Arnold Wells and Mr. Petch. I have now passed my 81st birthday and thank

God for all his mercy and benefits.

*Rahotu June 2nd, 1943.
Methodist Times. October*

Our thanks to Elva Symons for contributing this to the Opunake & Coastal News.

THE PRECISE WAY TO GROW GRASS THIS SPRING!

0800 432 866



eieio.co.nz



EARLY PLANNING = GREAT RESULTS

If you own a farm, lifestyle, grazing property or forestry block around Coastal and South Taranaki, and have been considering selling, contact Blair Burnett or Ben Johnston for further information about planning early for the coming rural real estate season to achieve a great result.

BLAIR BURNETT
Coastal Taranaki

021 190 7728
blair.burnett@eieio.co.nz

BEN JOHNSTON
South Taranaki

027 422 0030
ben.johnston@eieio.co.nz

Cicelia's Crafts and Antiques is unique

Cicelia's Crafts and Antiques, 43 Tasman Street, Opunake (next to Pastimes) opened for business in late June of this year under the ownership of Raewyn Cornford and the support of her husband Ian. Raewyn took over from the former owner of Treasure Trove acquiring the bulk of the interesting stock. Since then Raewyn has stamped her own mark on the enterprise and there is basically something of quality for everyone.

It's early days but everything is going very well. "It's amazing - I've doubled turnover already," comments Raewyn. She is heartened by the positive feedback from customers, such as "This shop is magical" and "This is wonderful."

She is keen on giving used items a second life and sees her shop as a preferable option to goods deteriorating in garages. "We feel we are recycling and keeping a lot of goods out of the landfills." She is also keen to attend auctions, to extend the process, such as the regular one in Hawera.

The new name *Cicelia* is in honour of two of Raewyn's forebears her great grandmother and her great great grandmother -



Raewyn Cornford at her counter ready to help find treasures for her customers.

both had the same first name. Originally, the two ancestors came from Dublin, Ireland.

Apart from furniture, crats, antiques and collectables there is a huge collection of books, early magazines, tools, bedding, curtains, clothing, knitware, records, CDs, ornaments, jewellery, skis, pond pumps, prams, paintings, and plants.

In the pipeline is another great initiative; from October seedlings will be available

as Raewyn has obtained a commercial grower. This hearkens back to earlier times when Raewyn and Ian had garden and gift shops, both in Opunake and Papamoa, near Tauranga.

Raewyn has strong connections with Opunake as she was born and bred here, before working in various other places including India. She has fond schoolgirl memories of vacation jobs, working for such shops as

Rae's Shoe Shop, Gibbs Bakery and Peats drapery.

Raewyn brings a wealth of employment experience to her new enterprise, which can only be advantageous for her customers and the business community. She has been a credit controller for Mercury Energy, worked for Yellow pages, a manager for the New Zealand Herald, as well as various private enterprise ventures.

Raewyn is happy to sell

antiques, art, craft and other items on behalf of people for a modest commission. She wants to promote local talent and makes special mention of Opunake artist Joan Edwards, whose art treasures are on display.

The hours are Wednesday to Friday 10.30am - 3.30pm and the premises are open both days of the weekend

10.30am to 3pm. Cicelia's Crafts and Antiques is also always open on public holidays.

Make sure you find time to visit this intriguing shop where a friendly welcome and informed help is on offer.

As to the future Raewyn is flexible: "I am open to whatever will evolve," she says with a smile.



CICELIAS

43 TASMAN STREET, OPUNAKE
(Next to Pastimes & Post Office)

COLLECTABLES, BOOKS, PLANTS,
CRAFTS, FURNITURE, TOOLS,
CURTAINS, BLANKETS, ETC.

Opening hours
Wednesday to Sunday
Open all public holidays
10.30 - 3PM



Pop in and take a look!!
I do sell antiques etc on behalf.
Any queries 0272468604



38 IHAIA ROAD
OPUNAKE

PH 06 761 8999 027 256 8083 accounts@agrimec.co.nz

CHECKED YOUR TYRES LATELY?

ARE THEY SAFE? R U READY FOR YOUR WOF?

Walsh Agrimec Tyres and Services have every tyre you need, to suit your budget and requirements for your vehicle.

UP TO 20% OFF

two or more tyres on our wide range of selected tyres.

REPLACEMENT TYRES & PUNCTURE REPAIRS

COME AND SEE US FOR A TYRE QUOTE. WE SUPPLY 4X4 ROAD, ALL TERRAIN, MUD TERRAIN, ATV, SMALL & LARGE IMPLEMENT TYRES.

GREAT PRICING ON ATV COMBO'S AVAILABLE - GET YOURS TODAY!



Juffermans Surveyors Ltd

Our Stratford office on Broadway and our Hawera office at Princes Street have joined forces with a couple of Planners and an Engineer and are now operating out of our new regional office at Prospero Place in Stratford.

Our people previously at Hawera are also in the regional office, and mobile.

Allen Juffermans
Surveyor
Juffermans Surveyors Ltd
Prospero Place
STRATFORD
06 765 4122

Our other offices:
51 Dawson St, NEW PLYMOUTH
06 759 0904
Mobile | HAWERA
06 278 4135

Exploring Taranaki in 1912 fascinating film



A glimpse of Taranaki history.

If anyone would like a fascinating glimpse into the past, Ngā Taonga Sound and Vision has some fascinating old film which can be viewed online. One section entitled

Exploring Taranaki features film of picnickers at the annual picnic at East End Beach, New Plymouth taken in 1912. Some great footage of children having fun at the picnic with a variety of

innovative challenges like the barrel and the greasy pole, it's something to see and perhaps a few ideas for the Opunake's annual Beach Carnival. It's well worth a look for the organisers. They

surely knew how to entertain the children. The film would then be shown at the local picture theatre attracting a huge audience. Another category in the archive features trains

which should appeal to train enthusiasts.

There's also film of the first race around Mt Taranaki – a distance of 104 miles held on August 17, 1911. The course was from New Plymouth to Opunake, to Eltham and then back to New Plymouth

and the Evening Post reported that it was 'said to be the longest circular track in the world for a cycle road race.' Evening Post, August 18, 1911, p.11.

This extraordinary early film can be seen online at: news@ngataonga.org.nz

Delivered free around the Mountain every fortnight.
Ph: 06 761 7016

OPUNAKE & COASTAL NEWS

Furniture Zone
make your house a home

Rhodes Mattress
ONLY \$99

Save \$100's on our full range of Rhodes mattresses

Available sizes: S, KS, D, Q now ONLY \$99
 Offer ends 30 September 2021

36 months interest free

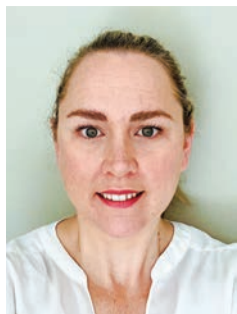
Premium Quality
Affordable prices.
Who can beat that?

Furniture Zone
make your house a home

 Kiwi owned and operated
 5 year warranty on beds

Come and support your local, NZ owned and operated store:
Furniture Zone New Plymouth
 298 Devon Street East, NP
 Store Manager: Tim Gecse
 Ph 06 215 3020

Milk Urea Musings



EMILY HOUSE

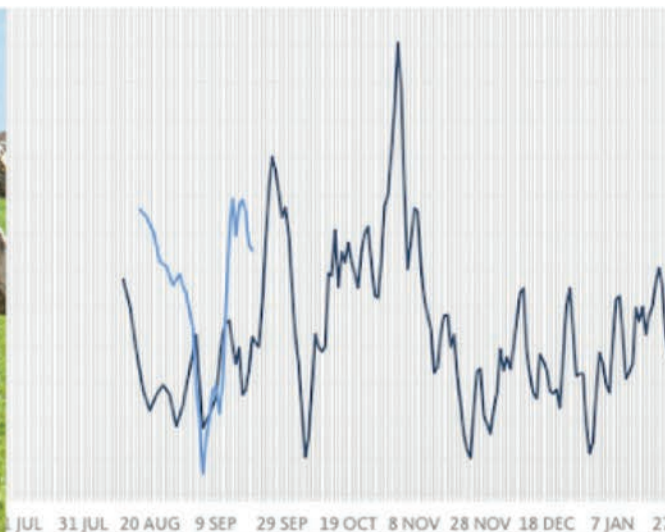
the same.

Most farmers will be accustomed to monitoring Milk Urea levels to make sure dietary protein levels are sufficient. High pasture crude protein levels (and therefore high MUs) are common in spring pastures and can be made worse by spring nitrogen fertiliser applications.

Recent research in New Zealand and overseas shows a direct relationship between MU and grams of urinary nitrogen excreted per cow per day.

On average this equates to about 7 grams of urinary nitrogen per 1 unit of MU. This means if you reduce your MU by 1 unit you'll also reduce ammonia and nitrous oxide emission by between 3.5% to 6%.

Following this logic, a reduction from 40 MU to 30 MU in a 500kg cow herd equates to a reduction of 35kg/N or between a 35-60% reduction in nitrogen emissions. Another way to think about this is, that if your MU is sitting at 40



Recent research shows a direct relationship between MU and grams of urinary nitrogen excreted per cow per day.

you're potentially losing 35kg/N per day that you may have paid for in fertiliser.

But excessive MU levels are not just an enemy of the environment. While there is a focus on recommended minimum levels (20-25), the impact of excess MU is largely dismissed. Crude Protein levels between 18-22% DM are considered sufficient to support peak

lactation but pasture typically contains 50 to 100 percent more protein than is required by the cow.

Above 30% DM Crude Protein cow health and performance may be compromised. Signs of high protein pastures include reduced gut transit time, sloppy dung, lower milk production, lower milk fat percentage and loss of milk production.

When protein levels in the diet are excessive, additional energy is required to metabolise this level of protein and a greater rate of urea nitrogen will

be excreted. Additionally metabolism of urea over calving will place further strain on the liver which will already be at capacity and higher levels of circulating ammonia will result.

Further consequences of some of these factors result in delayed or prolonged negative energy balance and hence weak, silent, or delayed oestrus which can negatively impact reproductive performance.

To determine crude protein levels on your farm you need to take pasture samples. Using these pasture levels in conjunction with

MU levels from your milk production data will guide you to make economically, environmentally and cow-friendly decisions.

The use of MUN(or MU in New Zealand) as a nitrogen management tool may not only enhance dietary nitrogen use efficiency and reduce milk production costs, but also reduce the negative impacts of nitrogen emissions. What's good for the environment will also be good for your cows.

Emily House
5th Business Agri.

Decommissioning needs rethink

Proposed new rules for decommissioning oil and gas infrastructure need a rethink to achieve their objectives and avoid unintended consequences, Energy Resources Aotearoa has told a select committee.

"The industry supports the intent of the Bill and our members are already set to take responsibility for decommissioning fields at the end of their lives," says chief executive John Carnegie.

"However the Bill is regulatory overkill with different requirements piling on costs, far more than

needed to protect taxpayers.

"Much of the Bill is retrospective, which is like moving the goal posts after the ball has been kicked.

"These changes could add even more uncertainty and disincentive to invest in our natural gas supplies, driving up the cost of energy even higher.

"This would destroy jobs, punish our exporters, and increase the cost of living for vulnerable New Zealanders."

Energy Resources Aotearoa's submission is supported by independent advice commissioned from

experts:

-Law Professor Philip Joseph says the bill is retrospective and "constitutionally objectionable" and "raises a fundamental rule of law concern," which would be damaging to business confidence.

Justin Smith QC expresses serious concern about 'trailing liability,' which means former permit holders can be liable for fields they have transferred and no longer control. He says it is "a truly novel and draconian provision in New Zealand."

It's not too late to have a great Spring!



DietDecoder
Advancing Animal Wellness

We can help you improve animal health outcomes.

Please call us on **0800 765 854** we'd love to chat.
www.5thbusinessagri.nz

Ready.
Select.
Grow.
Nitrophoska® Select



Set maize up for a strong start with Nitrophoska® Select compound fertiliser.

Talk to your agri manager or call today.

Nitrophoska
TRUSTED BY GROWERS FOR OVER 40 YEARS

ravensdown

Enabling smarter farming for a better New Zealand®

0800 100 123
ravensdown.co.nz

Young Farmer of the Year winners talk about the wealth of opportunities in ag

On August 22, 1969, Gary Frazer from Swannanoa was crowned the inaugural Young Farmer of the Year, the same year that the first Fieldays event was launched at Te Rapa Racecourse.

Over 50 years later, the competition still stands as a staple event in the rural calendar and an opportunity for rural youth to come together and showcase their skills, knowledge, and stamina. The current and past

Young Farmer of the Year, Jake Jarman and James Robertson, are young agri professionals trailblazing through the primary sector in their respective fields.

Jake Jarman gained the title, 53rd Young Farmer of the Year in July. A couple months later, Jake says the excitement surrounding his win has settled now, and he's getting back to his normal routine, working as a Relationship Associate at

ANZ in Ashburton.

"It was definitely a rollercoaster afterwards with lots of celebratory messages, interviews, emails, and what not, so now things have settled down I've got my life back a bit."

Jake's roots go back to Inglewood, Taranaki, where he grew up on his parent's dairy farm, so he's no stranger to practical farming work, despite his current role being in an office. His role at ANZ sees him supporting Relationship Managers in their customer-facing roles, helping manage over 100 customers.

Jake says being the FMG Young Farmer of the Year has helped him prove his credibility to rural customers who aren't aware of his farming background.

"They love having a wee chinwag about Young Farmer of the Year, and it shows them that I'm not some city-slicker that sits in the bank and doesn't get their hands dirty. It proves that I can do all the practical farming stuff too!"

The 51st FMG Young Farmer of the Year (and 52nd due to 2020's contest



Jake at work on the farm.

being cancelled), James Robertson made history in 2019 when he became the youngest person to score the title. He says Young Farmers has been his source of inspiration since he was

little and being a part of Young Farmers over the years has presented him with a wealth of opportunities.

Like Jake, James grew up on his parent's dairy farm. The farm is based in

Cambridge just down the road from Mystery Creek, so Fieldays has always played a part throughout his life.

James currently works as a Technical Assistant at Fonterra. He's worked for the co-operative over the past four years on a range of projects. His current role is fast-paced and varied, as he assists Fonterra's Managing Director of Co-operative Affairs.

"Recently, I've spent time on the road consulting with farmers for the current capital structure review and have been working with the core team to sift through their feedback.

"Doing that groundwork resonates back to my upbringing and farming background which makes my role really fulfilling."

This year's FMG Young Farmer of the Year finalists came to Fieldays from up and down the country and went head-to-head in a one-off contest. This gave them a feel for what they could be up against in the grand final on the first weekend of July.

Continued page 20.

NZ FARMERS LIVESTOCK

For all your Service Bull requirements, Bull Sales & Paddock Sales. Now buying in milk cows.

FOR MORE DETAILS contact your local NZFL agent

Sheldon Keech - 0272227920
Bryan Goodin - 027 531 8511

ARE YOU RUNNING OUT OF GRASS?

We've got you covered with a liquid fertiliser sprayer.

AVAILABLE IN **650L** **1,150L** **1,600L**

- Easy to clean sump tanks.
- Fully galvanised tandem trailer complete with oscillating axles and flotation tyres for smooth travelling.
- Very low centre of gravity – making it safe to operate.
- Ezi-spray cast iron pump with stainless impeller and wear plate.
- Single nozzle 9 - 10m spray pattern – Easy no fuss application.
- Continuous agitation for mixing and keeping products in suspension. Dissolves urea very efficiently.
- Cover your desired spray area quickly and efficiently.



SPRAY EQUIP
Quality Sprayers since 1999

CALL US TODAY ON **07 544 5673**

100%
TARANAKI
OWNED & OPERATED

It all comes down to the soil

The farmer's greatest asset is their soil, says Hawera Multifert NZ soil consultant Mark Riddle. Healthy soil means healthy pastures which means healthy stock, and for the dairy farmer this is reflected in their production.

"The soil is like a piece of machinery. If cogs are missing it won't run the way it's designed to run," he says. "Cows have changed. Fertilisers have changed, but the soils haven't changed."

He says his soil tests are designed to take away the guesswork for farmers. He looks at the whole farm, taking into account the variations from paddock to paddock.

"This can give the farmer an accurate figure of the quantity of minerals needed rather than going by she'll be right or rule of thumb. Where a lot of farmers only look at one or two results from soil tests they need to look at how all the figures correspond in a practical sense."

The plant needs 16 different minerals, and it's important to look at the interaction between each of these minerals, he says.

"Most farmers look at the phosphate and the pH, but soil tests look at all the minerals. When a farmer overloads on one particular

mineral, the obvious one being nitrogen, it jams up and locks up the whole system, and it can strip the other minerals,, which means you have got to pay more to replace them, which leaves the cows deficient of certain minerals, which means they can't perform as best as they can. Thousands and thousands of dollars are going into cattle breeding, but if they are getting quick fix takeaways they won't perform."

He says this can be reflected in farmers having to pay more with cows being sick, and money having to be spent on more grass seed and chemicals, as well as contractors and heavy machinery to get problems fixed up.

He likens the situation to seeing a doctor who will prescribe medication to be taken rather than leaving it up to the patient to work out how much to take and when it should be taken.

Mark has been running his independent soil consultancy business for the last four years of his 10 years' experience, and his mainly dairy farming clients cover the Taranaki coast from Okato to Patea, and inland as far as Stratford.

Although he grew up on a sheep and beef farm near Hawera, he says he prefers



Mark Riddle of Multifert NZ

working with dairy farms.

"The vat can tell you pretty much straight away what you are doing. The cows don't lie. They either milk or they don't milk."

He says his experience is derived from all sides of the industry and he believes all have their strong points.

"In the industry, the liquid guys don't like the solid guys and vice versa, and the organic guys don't like the inorganic guys and vice versa. They can't all be wrong, so you just find out what works. I knew nothing when I came into the industry, just that something wasn't right. Farmers have been putting on twice what

they were putting on 10-20 years ago and just accepting it."

His work draws on the writings of agronomists like William Albrecht and Neal Kinsey, and many other leading soil scientists in New Zealand with years of international agronomy experience.

"It's 90 year-old science and it works all over the world in every soil with every crop."

He says being an independent consultant means he can help his clients get the best products available at the best prices.

While many farmers may be concerned about

not getting hold of their preferred products because of the Covid lockdown in Auckland and around the world, Mark says there are many other options once you fit the balance of the soil.

"The products needed to fix the soils, bar a couple are already in New Zealand.

So the farmers are not at the whim of international production and supply. This allows the farmer to be in control of their fertiliser program and budget."

Mark can be contacted on ph (027)202-5842.

DO YOU HAVE ENOUGH GRASS?

- Are you concerned about your Fertiliser budget?
- Is your farm growing to its maximum growth potential?
(Grass is still your most profitable feed source)
- Do you need to change your Fert program to meet industry standards?

**Frustration causes stress
Let me help you**



Together we can achieve your highest performing herd

Meet your local CRV team, they have all been born and raised on their local family farms and understand what makes Taranaki so special. Combined they hold over 50 years of experience in the dairy industry and hold a passion for helping farmers achieve their own success. Make an appointment to meet your local rep and experience the CRV difference.



MEET OUR TARANAKI TEAM



ANITA SCRIVENER
North Taranaki / Tariki / Stratford / Midhurst
021 741 381
anita.scrivener@crv4all.co.nz



DERRYN PHILLIPS
Stratford / Eltham / Hawera / Kaponga
021 582 363
derryn.phillips@crv4all.co.nz



GILL HAENGA
Coastal Taranaki / Manaia
027 499 0162
gillian.haenga@crv4all.co.nz



**REGIONAL SALES MANAGER
GRANT BACK**
027 473 2869
grant.back@crv4all.co.nz

Grant's solution to dropping effluent pond levels fast

On the edge of Waitara, North Taranaki, is where you'll find Grant's 300 cow dairy farm. A large free-standing barn is used for in-shed feeding, and approximately 200 cows are

milked throughout winter. With high input, comes high output, and Grant was looking for a way to lower his effluent pond level fast, especially in spring and winter when using a slurry

tanker was unsuitable. Being surrounded by lifestyle blocks, it's particularly important for Grant to have good control over his spreading. His go-to has been a slurry tanker with a dribble bar for spreading, however it can be a little heavy on the ground after



A Rain Wave drag hose system has proved to be the answer for a Taranaki farmer.

NZ FARMERS LIVESTOCK

For all your
Livestock requirements
Servicing the Coast

Contact

Bryan Goodin - 027 531 8511

Sheldon Keech - 027 222 7920



MICHAEL PRESTIDGE



Corkill SYSTEMS LTD

5 TASMAN ST, OPUNAKE

FREEPHONE: 0800 107 006 PH: 06 761 7531 - FAX 06 761 7336

Silent Diesel and Industrial Tractor Mount Generators For Dairy Sheds, Houses, Pump Sheds and Commercial Sites

Tractor Mounts Features:

- Supplied with weather proof cover
- Dials facing cab (one man operation)
- Heavy Duty Driveshaft
- Heavy Duty Construction
- 1000RPM Direct PTO Driven (no gearbox or belts)
- Backup and Repair Service for all Generators



Sizes to suit all situations

A full range of cabling and outlet options to suit your personal requirements



Check out our new website

www.corkillsystems.co.nz

wet weather, and a bit slow when the pond needs to be emptied fast. So he contacted Nevada for a solution.

Mike recommended a RainWave drag hose system: 'It's a very high capacity, low maintenance system ideal for lowering the pond fast. The RainWave applicator is great for controlling the effluent spread, and it's a system anyone who can drive a tractor can use.'

Grant could see the drag

hose system as something his staff could get on board with, and was pleased at the affordability of the solution, so he went ahead. His drag hose system includes the RainWave 3 point linkage applicator, Tramspread TS 1000 reeler, 1000m of layflat hose, and a big Bauer SX1000 pump (the ultimate for farmers and contractors).

So far Grant has been impressed with how fast it pumps, and the even

spread. 'It's not as exciting as driving the tanker, but a whole lot faster and easier on the body.'

After getting the Bauer pump installed Grant's worker, Kerry called to say there was a bit of a problem... 'I can't seem to get Grant to stop smiling.'

*Michael Prestidge
Nevada Effluent
Management Specialist*

Young Farmer of the Year winners

Continued from page 18.

"Getting the finalists to compete at Fieldays was a great opportunity for them to get a taste of what the final will be like and build awareness around the contest," James notes.

James, who also attended the event this year, says that Fieldays is a great opportunity to network with agribusiness professionals but also to catch up with people he hasn't seen in an age.

"It's such a great place to connect with everyone. I caught up with so many people I wasn't expecting to: school mates, industry contacts, university, work colleagues, and all sorts."

An important goal Young Farmers achieves is connecting young people with a likeminded community and encouraging them to get into the food and

fibre sector. Jake and James are very passionate about inspiring the next generation of young farmers.

James, who is on the Young Farmers board and the contest subcommittee, says The FMG Junior Young Farmer of the Year contest is a way young people can showcase their rural skillset amongst their peers.

"It's rare that you see a competition that recognises school students who spend their weekends helping their parents on farm or farming as their part-time job. The FMG Junior Young Farmer of the Year is a neat way of showing them that their skillset is special and should be recognised."

While it is important that students with the farming know-how consider a career in agriculture, Jake notes that students who are non-farmers should do as well, to

meet the demand of workers needed in the sector.

In this year's competition the FMG Young Farmer of the Year finalists were required to give a speech. Jake's topic was "what I wish school leavers who are non-farmers knew about opportunities in ag."

"People think working in ag is just milking cows, mustering sheep, and driving tractors, but there's also opportunities available in science, marketing, and business. I have mates from uni with non-farming backgrounds, that are now on farm or in working in the primary industries.

"We should all be champions for our industry and tell our stories to kids, so they can realise the wealth of opportunities on offer and get inspired about New Zealand being a leader in this field."



New Zealand's Dairy Effluent Management Specialists | nevadagroup.co.nz | 0800 464 393



A hundred years and moving forward for croquet club

This season the Park Croquet Club in Hawera are celebrating one hundred years of croquet. The 2021-2 playing season was launched on Saturday with South Taranaki District mayor Phil Nixon hitting the first hoop. To mark the 100 year milestone, the club will hold two three-day tournaments on Labour Weekend and Waitangi Day. There will even be hundred dollar as befitting the centenary theme. If these tournaments go well, they could possibly turn into annual events says club president Gary Engelen. The club are also due to host the New Zealand Open with other clubs from the South Taranaki Association in December.

Park Croquet Club has around 50 members, and they play on Tuesdays, Thursdays and Saturdays. Gary Engelen says that the introduction of Twilight croquet on Tuesdays and Thursdays for people interested in playing after work has proved popular and has pulled in more members.

Selwyn Metcalfe of the New Zealand Community Trust which recently made a \$20,000 grant to the club was among those at the season's opening day. He said the Trust aims to help people of all ages stay physically active, whether its older people or younger people who maybe thinking about giving up sport in favour of more sedentary pursuits.

The club's longest serving member is Isabel Caddick who is also a life member. She has been with the club since her friend Ina Tunnicliffe invited her along back in 1969.

"She and I were both on the girl guide committee, and she said when you get

on that committee, you are playing croquet so I did," she says.

While Isabel says she has enjoyed her play, she was never that competitive. What she did enjoy, however was managing tournaments, including about 14 national events.

"Everyone enjoys our lawns because they are so good, and our hospitality has always been so good," she says.

Isabel was also an Association referee from 1976-2011. When she first

1983 says there are clear differences between Golf Croquet and Association Croquet.

"Golf Croquet is straight hitting, while Association Croquet is more about tactics. You work out your angles and work it where you want it to go. It's more scientific, like snooker."

Club member Ricardo Pintor who is also a history teacher at Hawera High School has been researching the club's history. Originally the club played at King Edward Park, hence the



Sifting through the records. From left president Gary Engelen and long serving members Isabel Caddick, Barbara Strange and Norma Stevenson.

joined the club there were about 20-25 members. She says the development of Golf Croquet has brought in more players and made the game more popular internationally.

Another life member, Norma Stevenson who has been with the club since

name. In 1973 they shifted to their present location which back then was a bare paddock. They brought their clubrooms with them, which have been renovated in the years since then.

Ricardo points to a newspaper clipping from the November 8 1921 issue of



An early photo of croquet played at King Edward Park.



South Taranaki District mayor Phil Nixon hits the first hoop of the season.

the Hawera and Normanby Star as marking the club's beginning. Back then non-members could pay sixpence and be able to play for the day. There were reports the following year of matches being played against the Hawera Croquet Club.

Ricardo says the club's origins probably go further back. From the 1880s there were a lot of informal croquet clubs around the country but no national organisation. This didn't come about until about 1920 with the New Zealand Croquet Council. This means many clubs including Park date their beginnings from that time and have had or are planning their centenaries. He points to early undated photos of croquet games being played at King Edward Park and

says the club could be closer to being 110 years old.

Noteworthy players in earlier years have included well known Hawera identity Edna Wills who as well as being a player of note served as Secretary of the New Zealand Croquet Council.

The Park Croquet Clubrooms still has their Honours Boards and

trophies, some of which are no longer competed for. While celebrating their past, the club is looking towards the present and the future. Among the more recent competitions is a fixture against the Rose Garden Club in Palmerston North, which Park won for the first time this year.

Thinking of trying a new sport this year? Why not Golf Croquet?

Whether you are an individual, business or social group looking for a team building activity, we welcome your enquiries via Facebook or email

Park Croquet Club
James Campbell Memorial Park
High Street, Hawera
www.facebook.com/ParkCroquetClubHawera
parkcroquetclubhawera@gmail.com

SANDFORDS RURAL CARRIERS

For competitive pricing on all your rural cartage requirements - Give us a call today!

Taranaki wide
Phone 0800 707 404

SPORTS TURF RENOVATORS 2007 LTD

PROUD TO SPONSOR THE PARK CROQUET CLUB FOR THEIR 100 YEAR TOURNAMENT

YOUR PARTNER TO TURF EXCELLENCE
Hamish 021 623423 | www.sportsturfrenovators.co.nz

Sandfords Manaia Golf results

What's On Listings

ONGOING

Movies at Everybodys Theatre in Opunake: Playing several days and nights each week. Refer timetable in newspaper.

MONDAYS: Tainui Day Centre - St Barnabas Church Hall, 141 Tasman Street Opunake: Each Monday 10 am - 12:230 pm. Information call Jenny 7618080 or Glenys 6558025

Opunake Friendship Club: Meeting last Monday of each month in Opunake Town Hall at 1.30pm. All welcome.

TUESDAYS

Opunake Walking Group: Every Tuesday 10am. Meet outside Club Hotel on Havelock St. Phone Margaret 027 477 5600 for more info if needed, or just turn up.

Life Drawing Group: Weekly at the Emporium, 86 Tasman St, Opunake 7pm to 9pm. \$10 to pay for the model. Models always wanted; male, female, any age. If anyone is interested please call Marianne Muggeridge on 06 274 5713.

WEDNESDAYS

Lisa Keen Audiology at Coastal Care, Opunake: Wednesdays 9am - 5pm, for an appointment call 027 591 4222 - 0800 555 676

Okato & District Historical Society open every Wednesday: At the Okato Community Trust Hall, 47 Cumming St, Okato. phone Meg on 06 752 4566.

Opunake Embroiders Guild: Meet 2nd and 4th Wednesdays of the month, 10.30am-3pm at the Opunake Business Centre, Napier St, Opunake. Just come along or phone Sheryl 06 761 8769.

Okato Market: In Hempton Hall, Okato 4.30 to 6.30pm.

Free singing experience with Taranaki Harmony Chorus: Meet every Wednesday at Inglewood Mamaku Centre, 7-9.30 pm Phone Helen 021 296 0700.

THURSDAYS

Coastal Young Farmers: Meet 2nd Thursday of every month at 7pm at Butlers Reef Bar & Cafe, Oakura.

Taranaki Country Music Hall of Fame, Manaia: Running every Thursday night from 7.30pm, 11 Surf Highway, South Road, Manaia.

FRIDAYS

Eltham Business Association Friday Markets: 9:30am to 1pm, Carpark of Touch Point, High Street, Eltham.

Singer Songwriters, New Plymouth: Last Friday of the month at Little Theatre, 29 Aubrey St, NP from 7-11pm.

WEEKENDS

The Historic Cape Light & Museum: Open 11am - 3pm weekends, Bayly Road, Warea.

SEPTEMBER 28 TO OCTOBER 22

Hive Mind exhibition: At the Village Gallery, Eltham.

OCTOBER 2

Tui Oilfield Decommissioning upade meeting: Te Potaka Pa, Oaonui. 10am.

OCTOBER 12

Coastal Community Transport AGM: At Coastal Care Community Lounge, 10am.

OCTOBER 18

Ngati Tara o Oaonui Sandy Bay Society Inc AGM: At Sandford Event Centre, Opunake. 5.30pm.

OCTOBER 30

Opunake Playcentre AGM: At BBBach 17 Layard St, Opunake. 7pm.

OCTOBER 30 TO NOVEMBER 6

Taranaki National Art Awards exhibition: 10am-4pm. Sandford Event Centre, Opunake.

Latest results from Sandfords Manaia Golf are as follows:

Matt Laing.
September 18. Saturday Men.
1. Logan Symes. 2. Kevin Murrell. 3. Bruce Duffus. 4. Lennie Symes. 5. Wayne Baker. 6. Caleb Symes.

September 11. Saturday Men.
1. Wayne Baker. 2. Rod Le Fleming. 3. Nathan Ngere. 4. Graig Jones. 5. Phil Elliott and

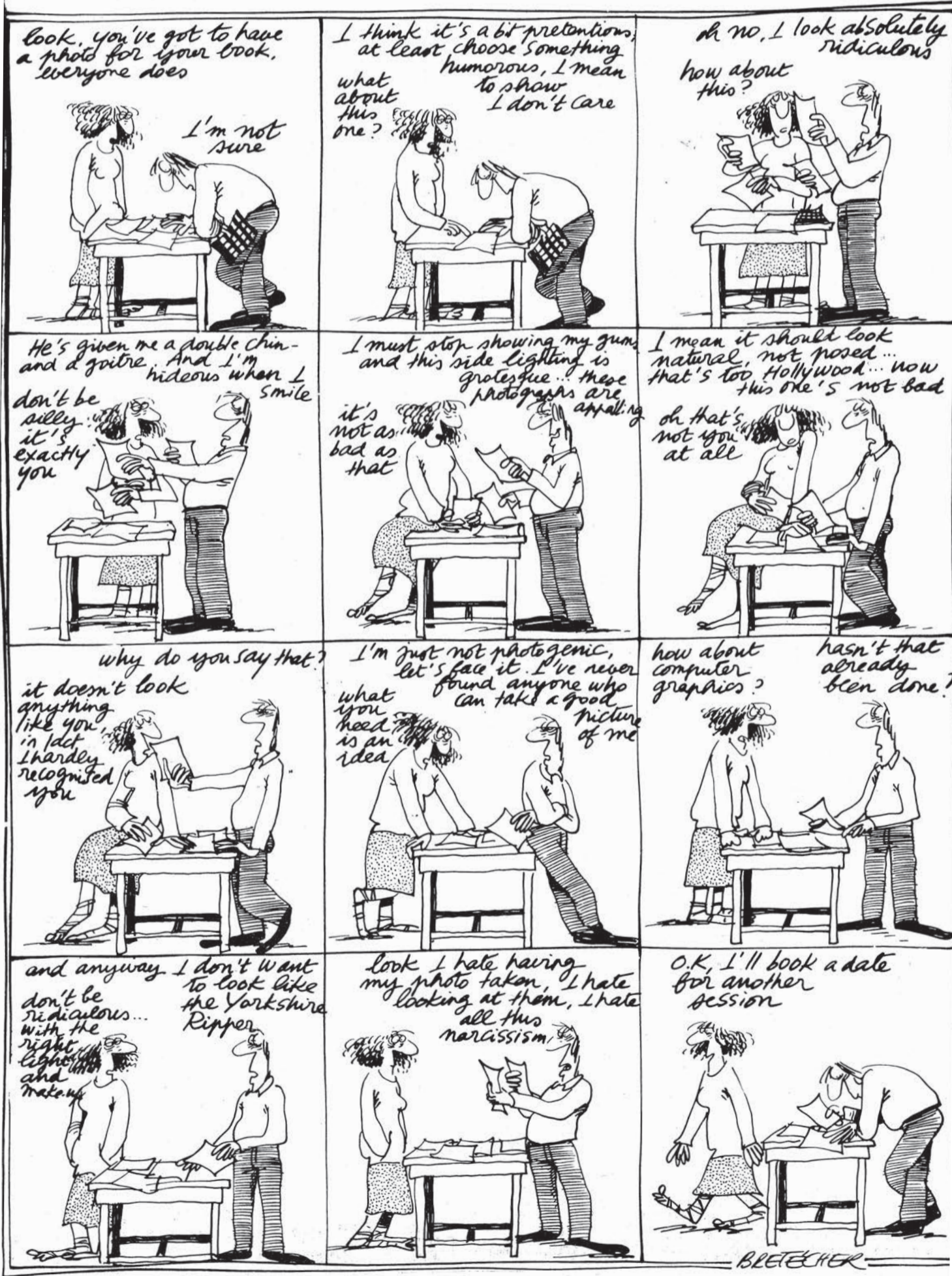


Sandfords Manaia Golf Course.

Our new cartoon

We hope readers will enjoy our strip cartoons by Claire Bretecher which we will be running every issue. I discovered her brilliant cartoons whilst living in the UK and used to send her books back to friends and family in New Zealand. As well as being very funny, they are also poignant, she is an acute observer of people and all their foibles and frustrations common to everyone. Her first three books were Frustration, More Frustration and Even More Frustration. Originally published in French, the cartoons have been translated into English.

TALKING PICTURES





NZFLL agents working at a 2020 sale.

Advertise your event in the Opunake & Coastal News

Call our sales team on
06 761 7016



6th ANNUAL YOUNG IN-MILK COW AUCTION

A/c Troy Stevenson on
Friday 1st October 2021 at
437 Patiki Road, Pihama, Sth Taranaki

Start Time: 11:30am Undercover
BBQ lunch provided

COMPRISING:

160 Frsn & Frsn X in-milk cows
BW147 PW191 R/A 99%
Herd test data available

DETAILS:

- TB C10 MBovis not detected & BVD negative
- All cows in-milk, milked twice daily in rotary shed
- 6th annual in-milk auction
- Strict selection criteria

AUCTIONEERS NOTE:

All cows personally guaranteed by our Vendors, offering 1-week trial. Cows purchased to supply calf milk, then offered for auction. Buy with confidence. We totally recommend and have received very good comments from previous buyers.

PLEASE NOTE:

This auction date is scheduled subject to any changes due to Covid-19 regulations

PAYMENT TERMS:

Payment due 20th January 2022. Deliveries immediate.

FURTHER ENQUIRIES TO CARRFIELDS LIVESTOCK AGENTS:

Brent Espin 027 551 3660 or
brent.espin@carrfields.co.nz
Daniel Crowley 027 215 3609 or
daniel.crowley@carrfields.co.nz

VIEW OUR CATALOGUE AT:
www.carrfieldslivestock.co.nz



PROGRESSIVE LIVESTOCK LTD

ROSEGOWAN HEREFORD 2nd ANNUAL ON-FARM SERVICE BULL SALE

Subject to Covid-19 Restrictions and Protocols

Muggeridge Family Farms
C/- Robert & Alison Muggeridge
811 Kina Road, Oaonui
Opunake, Taranaki

TUESDAY 28th September 2021

Start time: 12pm
Sale held undercover with
BBQ lunch provided

- 14 x 2 & 3 yr Hereford Bulls
- 55 x 1yr Hereford Bulls
- 10 x 2yr Jersey Bulls
- 22 x 1yr Jersey Bulls

Animal Health

All bulls are TB/BVD tested negative
BVD & Lepto vaccinated

Payment Terms

Payment due 20th October 2021
PLL Bull Plan Finance available
Free transport Taranaki wide
on week of sale

For catalogue or more details Please Contact

Matt Muggeridge 027 237 8661
Vendor's Robert & Alison Muggeridge
027 659 1188 or 06 763 8401

Or your local Progressive Livestock Agent
www.progressivelivestock.co.nz

LK01084240

KAIROA FARMS
Account Philip & Alethea George
18th Annual Sale
To be conducted on the farm at
379 Lincoln Rd, Inglewood
Thursday 30th September 2021 at 12.30pm

Offering 40 PB Hereford Bulls comp: 40 x 2yr Virgin PB Hereford Bulls

Points to Note:

- Owner Bred closed herd
- 55 years of proven genetics
- Very quiet natured
- Deep red colouring
- FREE GRAZING until 20/11/2021
- DEFERRED PAYMENT until 20/11/2021



Animal Health:
BVD Vaccinated
BVD Tested Negative
TB Test C10
EBL Tested Negative
Lepto Vaccinated

Contact:

Agent — Stephen Sutton 06 752 3305
Vendor Philip & Alethea George 06 756 8211
027 442 3207
or your local New Zealand Famers Livestock Agent



ADVANCE CARE PLANNING

Start the conversation

- If you're unable to make decisions for yourself, what treatment(s) would you want?
 - What concerns or fears do you have regarding the end of your life?
 - Do you have a preference about where you die?
 - Do you have any religious / spiritual values?
- Sharing your thoughts and wishes about your future care reduces stress, anxiety and depression for your family and loved ones.



ADVANCED CARE PLANNING

Free Information Presentation at CoastalCare with Mary Robertson.
Come along on Wednesday 29th September at 1pm
for a free cuppa and biscuits. All ages welcome.



Advance Care Planning
Facilitator, Taranaki DHB
acp.admin@tdhb.org.nz
06 7536 139 ext 7083
www.advancecareplanning.org.nz



72 Tasman Street, Ōpunakē - www.everybodystheatre.co.nz - Phone 027 383 7926
September/October 2021

Adults \$10, Students 4-16yrs and Senior Citizens \$8, Under 4 free

SUICIDE SQUAD
Action, Comedy | 2hrs 12min | R13: Violence
Fri 24th Sep 7pm | Sat 9th Oct 7pm

RESPECT
True Story, Drama | 2hrs 25mins | M
Sat 25th Sep 7pm

FREE GUY
Action, Comedy | 1hr 55 mins | M
Fri 1st Oct 7pm

STILL WATER
Crime, Drama | 1hr 49mins | M
Sat 2nd Oct 7pm

ANIBO
Animation, Comedy | 1hr 24mins | PG
Wed 6th Oct 1pm | Sat 16th Oct 1pm
Fri 29th Oct 7pm

PAW PATROL: THE MOVIE
Animation, Kids & Family | 1hr 28mins | PG
Sat 25th Sep 1pm | Sat 9th Oct 1pm

QUEEN BEES
Comedy | 1hr 42mins | PG
Sun 26th Sep 7pm | Sun 24th Oct 7pm

BOSS BABY
Family, Comedy | 1hr 47mins | PG
Sat 2nd Oct 1pm | Fri 15th Oct 7pm
Sat 23rd Oct 1pm

ICE ROAD
Drama, Action | 1hr 49mins | M
Sun 3rd Oct 7pm | Sat 16th Oct 7pm

NO TIME TO DIE
Action, Adventure | 2hr 43mins | TBC
Fri 8th Oct 7pm | Sun 17th Oct 7pm
Sat 23rd Oct 7pm

Come and visit in October to see our brand-new curtain in action!

Rural COVID-19 vaccination clinic to go on tour

The rural outreach team from the Taranaki COVID-19 Vaccination programme are pulling on their gummies in preparation to visit some of Taranaki's most rural towns.

They are taking their mobile COVID-19 vaccination clinic on a round-the-mountain tour of 14 rural community

halls during September and October.

Bevan Clayton-Smith, Taranaki COVID-19 Vaccination programme senior responsible officer, said "Bringing the opportunity to receive a COVID-19 vaccination to the heart of our rural communities is an important part of the programme roll-out.



essential work.

"Making sure our dairy farmers receive the best protection against the COVID-19 virus is not only vital for them, their families and their community, but also for the economy of the region and country as a whole."

Bookings are being encouraged for those who may have limited time, but walk-ins are also welcome if people find themselves with a spare half-an-hour and want to get vaccinated.

Appointments can be booked online at bookmyvaccine.nz, or by calling 0800 28 29 26 (8am-8pm, 7 days).

Rural Community Pop-up Covid 19 Vaccination Clinics are happening near us over the next few weeks. See the timetable below for details.

"We know that it can be particularly during the busy time of calving, so having local clinics will mean hard to get off the farm, time of calving, so having less time away from that

1 x Free coffee with any purchase*

*When you show us your invoice from the new Okato Farm Source store. Offer valid until October 31, 2021.

BREAKFAST, LUNCH, DINNER AND CATERING

Accommodation available:
7 rooms including one disability friendly room on the ground floor.

STONY RIVER HOUSE
2502 SOUTH ROAD, OKATO
06 752 4968 | stonyriverhouse@gmail.com

HIVE MIND

CELEBRATING DIVERSITY - AN EXHIBITION BY SOUTH TARANAKI ARTISTS & YOUTH

28 SEPTEMBER - 22 OCTOBER 2021

THE VILLAGE GALLERY 166 HIGH STREET, ELTHAM
OPEN MON-SAT 10AM-3PM

Supported by: South Taranaki District Council

Call us on **06 761 7016**

TO SEE HOW THE
OPUNAKE & COASTAL NEWS
CAN HELP YOUR ADVERTISING REACH
YOUR TARGET AUDIENCE

FOR ADVERTISING THAT WORKS

OPUNAKE & COASTAL NEWS

Rural Community Pop-up COVID-19 Vaccination Clinics

Place	Time	First dose	Second dose
Whangamomona Hall , 6013 Ohura Road, Whangamomona	10am - 3.30pm	Monday, 27 September	Monday, 8 November
Toko Hall , 1073 East Road, Stratford East	9am - 3.30pm	Tuesday, 28 September	Tuesday, 9 November
Kaimata Hall , 722 Tarata Road, Kaimata	9am - 3.30pm	Wednesday, 29 September	Wednesday, 10 November
TET Stadium , 1 Elliot Street, Inglewood	9am - 3.30pm	Thursday, 30 September & Friday, 1 October	Thursday & Friday, 11-12 November
Hempton Hall , 72 Carthew Street, Ōkato	9am - 3.30pm	Monday, 4 October	Monday, 15 November
Rahotu TSB Domain , 54 Rahotu Road, Rahotu	9am - 3.30pm	Tuesday, 5 October	Tuesday, 16 November
Oaonui Hall , 5142 South Road, Oaonui	9.15am - 3.30pm	Wednesday, 6 October	Wednesday, 17 November
Pihama Hall , 3271 South Road, Pihama	9.30am - 3.30pm	Thursday, 7 October	Thursday, 18 November
Te Kiri Hall , 2716 Eltham Road, Te Kiri	9.15am - 3.30pm	Monday, 11 October	Monday, 22 November
Auroa Hall , 746 Auroa Road, Auroa	9.30am - 3.30pm	Tuesday, 12 October	Tuesday, 23 November
Kaponga Town Hall , Victoria Street, Kaponga	9.15am - 3.30pm	Wednesday, 13 October	Wednesday, 24 November
Taumatua Rec Centre , Preston Street, Eltham	9.15am - 3.30pm	Friday, 15 October	Friday, 26 November
Hunter Shaw Building , 132 Egmont Street, Patea	10am - 3.30pm	Monday, 18 October	Monday, 29 November
Waitoetoe Hall , 19 Pukearuhe Road, Mimi	9am - 3.30pm	Tuesday, 19 October	Tuesday, 30 November

Book online at BookMyVaccine.nz or call 0800 28 29 26 (8am-8pm, 7 days).
Walk-ins welcome.

The COVID-19 vaccine is free, safe and the best way of protecting yourself, your whānau and your community against the COVID-19 virus.





**PENNYLANE
28th ANNUAL
BULL SALE**


Monday 27th Sept, 11.30am at One Stop Bull Shop
1167 Croydon Rd, Midhurst, Taranaki.

FAIR DINKUM NO NONSENSE BULL PAYMENT PLAN
• **0% interest**
• **Payment 20th December 2021**

• All bulls are TB & BVD Tested Negative & fully vaccinated

290 GREAT QUALITY BULLS
Pedigree Hereford and Angus 2 & 3 yr Bulls
Commercial Hereford 2 & 3 yr Bulls
Jersey 3yr, 2yr & 18 month Bulls

THE ONE STOP BULL SHOP
Kevin & Sherry Collins | Brenda Honnor
06 762 8058 | **027 4415 935**

3rd Annual Elite InMilk Heifer & Cow Sale
On A/C: Waiau Trust (Jim & Sue Webster)
29 Ohanga Road, Onaero
Waitara (North Taranaki)
Thursday 30th September 2021
11.30Am Start

50 x Friesian & Friesian X Quality InMilk Cows & Heifers
Herd BW 172, Herd PW 243 Rel 95%

PGG Wrightson are proud to be favoured by Jim and Sue Webster to sell, by Auction on Farm, this top quality offering of young Friesian and Friesian X Cows. The Waiau & Taramont Herd names are synonymous with production, type and breeding that have been used by AB Companies over a long period of time. Jim has a passion for breeding top quality Dairy Cattle, hence giving prospective purchasers this opportunity to buy cows with proven ability to produce. These cows and heifers will come forward in top order, ready for sale day.

Points to Note

- Offering includes 12 Contract Cows
 - BWs to 354
 - PWs to 471
- Herd Tested & A2 results Available
- 1st Herd Test ave 2.46 m/s per Cow
- Catalogs with 3GPs will be made available
- Deferred Payment to 20th October 2021
 - Live Streamed on BIDR
- Viewing is encouraged and can be arranged with Jim on 027 414 0563

For further details please contact:
PGG Wrightson:
Jeff See: 027-568 0813
Andrew Gibson: 027-444 0108
Andrew Reyland: 027-223 7092

AU-908-687AA

**IHAIA
MOTORS**
for
A GRADE REPAIRS

- Tyres
- Lubes
- Panel beating
- Farm Bikes
- All mechanical repairs
- Insurance work
- Radar Detectors
- Batteries
- W.O.F
- Painting
- LPG

AT COMPETITIVE PRICES.
Tasman St, Opunake
Ph (06) 761-8502

NZ FARMERS LIVESTOCK

J & P HINZ PARTNERSHIP

Yearling Jersey Bull Sale
Tuesday 28th September
11:00am
Stratford Saleyards
105 x 1yr Jersey Bulls

Outstanding line up of high country fully identified & tested bulls

Contact Simon Payne 027 241 4585 or your local NZFL agent.

MyLiveStock
Website | Mobile | App



In Milk Cow Auction
Tuesday 28th September 11.30am
A/C- Reckless LTD – Kurt & Katie Parry
PGG Wrightson Inglewood Sale Yards for Convenience

120 Genuine In milk CRV Frsn Frsn cross cows

Auctioneers Note:
From early Calving South Taranaki Farm (10th July)
Come forward un-mated and all Metri-Checked ready for Mating System 2 cows – rest of herd are Autumn calving
TB C10, EBL free, Bovis tested Clear
Low SCC – 430kg/cow last season
Cows come forward in great condition
Herd test will be completed- Information on big screens at auction off Minda Live

A real opportunity to get cows into the Vat – ready for mating – sold with the grass

Further Enquiries
Mark Neil 027 742 8580
Andrew Gibson 027 444 0108
Lyle Smart 027 444 0108

Clearing Sale – In Milk Herd Auction
On Account of B J & L B Bishop
Farm 75yrs + under the family ownership

Date and Location
Tuesday 12th October 11:30am @ Inglewood Saleyards

Herd Details
110 in-milk predominantly Jersey Cows
BW 188, PW 202
EBL free, C10, BVD & Lepto vaccinated. Current SCC 80,000 and producing 420 m/s on System 2.


Auctioneers Note:
Due to a change in farming practice it's a privilege to offer this outstanding herd of quiet, quality cows. This extremely young (nothing over 8yrs to be auctioned) herd has milked through a herringbone shed twice a day producing 420 m/s per cow on a system 2. Current SCC is 80,000 for this season, cows to herd test on 23rd September.

Payment and delivery terms: Payment due 20th November 2021, Delivery day of sale or contact your agent.

NZFL Vendor Agent
Sheldon Keech 027 222 7920
sheldon.keech@nzfl.co.nz

PGG Vendor Agent
Dennis Dravitzki 027 406 2372
dennis.dravitzki@pggwrightson.co.nz

NZ FARMERS LIVESTOCK
Working with Farmers for Farmers



PUBLIC NOTICES

COASTAL COMMUNITY TRANSPORT



We are here to get you there

AGM

12th October 2021
10am CoastalCare Community Lounge

All welcome, tea and coffee provided.

Ngati Tara o Oaonui Sandy Bay Society Incorporated

ANNUAL GENERAL MEETING

Sandfords Event Centre
Opunake
Monday 18th October 2021; 5.30 p.m.

New Members Welcome



OPUNAKE PLAYCENTRE AGM

Saturday 30th Oct, 2021
7:00 p.m.

BBBach 17 Layard St, Opunake

Contact: opunake@playcentre.org.nz

NAUMAI HAERE MAI

Nga uri o Ngāti Kahumate, Ngāti Tara, Ngāti Tūhekerangi & Ngāti Haupoto and all interested community groups and folk

SATURDAY, 2nd October 2021

Te Potaka Pā, Oaonui

10.00am - 12.00pm followed by lunch

TUI OILFIELD DECOMMISSIONING - Phase 2 and 3 update and CIA Q&A MAUI A & MAUI B update

RSVP - Please fill in the registration of interest or email fran@taranaki.iwi.nz or text 027 441 1146

Have you seen this bird?



ROOKS ARE AN AGRICULTURAL PEST threatening crops, pasture and native biodiversity

If you see rooks anywhere in Taranaki please contact the Taranaki Regional Council or scan this QR code to provide details.



The data submitted by you and other residents will help Taranaki Regional Council identify and control rooks within the region.

Environment Services

0800 736 222

environmentservices@trc.govt.nz

IS IT A ROOK?

Rooks are large black glossy birds, larger than a magpie, with a harsh 'caw, caw' call.



ROOK



MAGPIE



BLACKBIRD



For more information visit: www.trc.govt.nz/rook

Do you have any of these symptoms?

- Fatigue
- Foggy brain
- Hot and shitty
- Headaches
- Depression
- Constipation
- Body odour
- Bad breath
- Insomnia
- Smelly wind
- Coated tongue
- Overweight
- Indigestion



The Poo Brew

NEW IMPROVED POO BREW

A combination of herbal powders to assist in healing the gut, nutritionally supporting the body and cleaning the bowel

Heals the gut

L-Glutamine is an amino acid which heals the gut. It is especially important for brain metabolism as it sustains mental ability. L-Glutamine has been effective in reducing the severity and incidence of very painful diverticulitis. It reduces sugar cravings, helps in fat reduction and in building muscle.



THE HEALTH SHOP

We keep you healthy™

Centre City Shopping Centre Ph: 06 758 7553

Cleans the bowel
Psyllium is proven to increase faecal size and moisture. The most common characteristic of stools following supplementation of psyllium are soft, sleek, and easily passable stools. Compared to other laxatives, psyllium doesn't cause wind. Psyllium goes sticky, pulling off the rubbish from the intestinal wall.

Nutritionally nourishes the entire body
Barley grass has no gluten as it is from the shoots of the barley plant. It is a natural detoxifier and boosts the immune system. It is also very alkalisating to the body attributing to reducing acidity in the body which may cause acidosis damage. An imbalance of an acid/alkali ratio in the body may lead to problems like sleep disorders, cardiac pain, fatigue, constipation and fragile fingernails. Barley is a nutrient rich superfood loaded with vitamins such as all the B Vitamins, Vitamin C, Vitamin E and Vitamin K. Barley contains an abundance of electrolytes such as magnesium, phosphorous and potassium, along with other essential minerals such as zinc, iron and calcium. Barley grass is a powerful antioxidant, containing essential amino acids and beneficial enzymes.

Bristol Stool Chart

Type 1		Separate hard lumps, like nuts (hard to pass)
Type 2		Sausage-shaped but lumpy
Type 3		Like a sausage but with cracks on the surface
Type 4		Like a sausage or snake, smooth and soft
Type 5		Soft blobs with clear-cut edges
Type 6		Fluffy pieces with ragged edges, a mushy stool
Type 7		Watery, no solid pieces. Entirely Liquid

Your Guide to healthy bowels

1 - indicates constipation. We recommend an increase in fibre, hydration and magnesium.

3 - indicates ideal stools which are easier to pass.

5 - shows loose stools. Indicative of an irritated gastrointestinal tract. We recommend digestive enzymes, an increase in fibre and avoiding wheat.

PUBLIC NOTICES



Next Meeting is on
Monday October 6, 2021
at 5.30pm

Hughsons & Associates Boardroom at the
Opunake Business Centre, 23 Napier St, Opunake
(opposite the Coastal Care Medical Centre)

FOR RENT



Office Rooms/ Board Room available

Long term, short term or casual basis

Building has kitchen facilities, wheelchair access, cleaning services and plenty of parking on Napier Street or at rear of building on King Street.

Inquiries to Brenda Pittams - Ph 06 278 4169

WANTED TO BUY

Stevenson Calf Rearing

MILK & COLOSTRUM WANTED

Picking up 24/7

Our tanker handles large volumes

Ph. Mark or Trish on 0800 350 340 or txt
027 495 2897 E: markstevo@xtra.co.nz

Troy Stevenson 027 469 7636

E: troystevo@gmail.com

SCRAP METAL - for all
scrap metal Taranaki wide,
give us a call. Molten Metals
(06) 751 5367.
www.moltenmetals.co.nz



**OPUNAKE & COASTAL
NEWS**

The next issue of the Opunake & Coastal
News is due out on October 7.
Call us now on 06 761 7016 to be in it.

TRADES & SERVICES



HCL Builders

Contact Phill - 027 236 7129

P.D. FLEMING LOGGING LTD

Forestry rigged & certified 33 ton loader,
National Certificates in Forest Operations,
Health & Safety approved. Free assessment on
what your trees are worth \$\$\$

Ph: Paul

027 630 9922 or email: paulflems@gmail.com



**OPUNAKE & COASTAL
NEWS**

HCL BUILDERS for
alterations. Ph 027 236
7129.

**COASTAL GIB
STOPPERS.** Phone Glenn
027 524 5745

HCL BUILDERS for
concrete work. Ph 027 236
7129.

McNEIL DECORATING
- for all your painting
and decorating. Ph: Jason
McNeil 027 233 4584.

CARPETS second hand,
large selection After Disaster
Ltd 223 Devon St West, NP.
Phone (06) 769 9265

HCL BUILDERS for
building decks. Ph 027 236
7129.

SITUATIONS VACANT

AUTO MOBILE MECHANICAL SERVICES

have a position available for a mechanic,
preferably qualified, at its premises at Rahotu.
Monday to Friday full time, part time considered.
We work on a wide range of cars and farm
vehicles from bikes to tractors and service all.



Email CV and covering letter to:
kelvinjordan@xtra.co.nz or call
06 763 8811 or 021 488 8021

AUTO MOBILE MECHANICAL SERVICES
5788 Main South Road, Rahotu | Ph: 06 763 8811



WITHERS COACHLINES

**School Bus Drivers New Plymouth,
Okato, Bell Block**

Due to the success of the recent MOE School Bus run
tender, we have gained another 9 school runs in the New
Plymouth area that start late Jan 2022.

We are seeking amazing drivers for these part time
positions. In addition to these school runs there may be
charter work for extra hours.

Driver training may be required (First Aid, School Bus
Driver unit standards, Internal Driver training).

You must have driving experience in Class 1, 2 and
ideally 4, and the ability to get a P endorsement.
However training may be provided to suitable candidates.

Withers Coachlines is committed to providing
exceptional service and Health & Safety to our
customers.

Potential candidates will be required to undergo drug
and alcohol testing as well as a Police Vetting check.

Applicants for this position should have NZ residency or
a valid NZ work visa.

Applications to : Blair Withers 021922896
or blair@withers.co.nz

WORK WANTED

DO YOU NEED A
LIVE-IN CARER?

Someone to cook, do
housework, laundry,
gardens, lawns?
I'm 61, non smoker,
reliable with full license.

Please phone Karen
027 699 8443

CHURCH NOTICES

Opunake Co-operating Parish

Havelock Street, Opunake - St Pauls - 9.30am every Sunday
Rahotu - Wesley - 11am first Sunday of the month

Okato Co-operating Parish

Okato - St Pauls - 10.00am, 1st and 3rd Sundays each
month
Okato - St Pauls - 5.00pm, Evensong, 2nd and 4th Tuesdays
each month
Oakura - St James - 10.00am, 2nd and 4th Sundays each
month

Opunake Catholic Church

St Martins, Pungarehu: 8.30am every 2nd and 4th Sundays
of the month
Our Lady Star of the Sea, Opunake: 10am every Sunday
Other areas
Manaia - Sacred Heart - 1st, 3rd Sat at 5pm
(2nd, 4th & 5th Sat at Hawera's St Josephs)
Kaponga - St Patricks, Sunday 8.45am
All welcome

St Patricks Catholic Church, Okato

Saturday Vigil 6.00pm - 1st, 3rd & 5th Saturdays

The Wave

Pentecostal Church 64 Domett St, Opunake
Sunday Services 10.30am
Women's Group 10am Tuesday
Men's Group 7pm Wednesday
Come along or contact
Belinda Philp
027 935 6191

St. Barnabas Anglican Church

141 Tasman St, Opunake
Sunday Services 10am
Communion 2nd, 3rd & 4th Sunday
Prayer & Praise 1st Sunday
Every 5th Sunday all 4 churches gather for
a Combined Service

Okato Community Church

Meets 10.30am Sunday at Hempton Hall.
Everyone welcome

**Opunake and Districts Business Association
Co-ordinator Required**

The ODBA is looking for a part time (20 hours per month/varies)
Business Co-ordinator to work alongside the ODBA Committee.

This Role involves supporting and growing the Association, organising and
increasing engagement in local events, and fulfilling most parts of the
Secretary role.

This position is for 12 months.

The Co-ordinator will work from home, use their own computer and
have a current Drivers Licence.

Strong communication in verbal/written form, strong knowledge of
Microsoft Word programmes and social media are required.

The Co-ordinator will need to attend one evening meeting a month,
usually a Monday.

Send your Covering Letter & CV to raybern01@hotmail.com.
Applications close at midday 30th August 2021.



**OPUNAKE
& DISTRICT
BUSINESS ASSOCIATION**



**OPUNAKĒ HIGH
SCHOOL
PATHWAYS
ASSISTANT**

We are seeking an
energetic and organised
person to provide pathway
assistance for our senior
students.

Hours to be negotiated up
to a maximum of 26 hours
per week. A job
description and application
form are available from the
school office.

Applications should include
a covering letter and CV.

Please apply to:

The Principal
Opunakē High School
PO Box 4
Opunakē 4645
admin@opunake.school.nz

Applications close

Friday 1st October, 2021

meritcars

with distinction

VISIT WEBSITE MERITCARS.CO.NZ

493 DEVON STREET EAST, STRANDON, NEW PLYMOUTH
CALL US TODAY 06 281 1925

FROM \$0 DEPOSIT FINANCE T.A.P.

ALL ON ROAD COSTS INCLUDED PLUS TANK OF FUEL. ONE STOP SHOP FOR FINANCE, WARRANTIES & FREE SMILES

2011 VOLKSWAGEN TIGUAN TSI
6 SPEED EXCELLENT CONDITION SUV
EXCELLENT ECONOMY
Climate Control Aircon, CD Player/BT
PHONE, ABS Brakes, 10 x Airbags, Alloy
Wheels, Vehicle Stability Control,
LOW KMS \$14995



2017 FIAT 500X SUV 6SP NZ NEW LOW KMS
NZ NEW, 6 Speed Manual, Intercooled Turbo, Multi Airbags,
Climate Control Air Conditioning, Power Windows & Mirrors, ABS Brakes,
Stability Control, Reverse Camera, Alloy Wheels, Remote Central Locking,
Cruise Control, Parking Sonar, Engine Autostop, Rear Spoiler,
Stereo with USB Aux & BT. 60km
ONLY \$18,995



2013 FORD KUGA TITANIUM 4WD
2.5 Turbo 5 Cylinder Automatic 5 Stage Tiptronic, Duratec, Power Steering,
Climate Control Air Con, ABS Brakes, Airbags x 6, Cruise Control, Leather Trim,
Alloy Wheels, Stability Control, Tinted Windows, Driving Lights 50km
ONLY \$22,995



2011 MAZDA AXELA SPORTS
2.0 Auto, Higrade
61km
\$15,995



12 AXELA SPORTS IN BLACK:
1.5 Auto 81km ARRIVING

2008 HONDA ELYSION VG 8 SEATER
Beautiful Hi Spec Example. Auto, QuadCam, 24 Valve, iVtec, VG, Alloy Wheels,
8 Seater. Bodykit, Headphone Sets for Rear Passengers. 74km
ONLY \$13,995



**WE ARE YOUR ONE STOP SHOP FOR QUALITY
VEHICLES FINANCE AND INSURANCE FROM
ZERO DEPOSIT AND ALL ON ROAD COSTS
INCLUDED IN PRICE
THIS WEEKS SPECIAL**

**2014 FORD TERRITORY TS AWD DIESEL
7 SEATER**

NZ NEW, DURATORQ V6-T, 6 Stage Tiptronic Auto, Cruise Control, Towbar.
POWER AND ECONOMY, BT Audio with Reversing Camera & Parking Sonar 100km

ONLY \$25,995



2010 MAZDA PREMACY SPORTS 20E
CD/DVD Player/Reverse Camera, BT
Phone & Audio, Auto Sliding Doors, ABS
Brakes, Air Bags, Auto Lights and
Wipers, SMART KEY OPERATION.



ONLY \$8995

2012 HYUNDAI ELANTRA
1.8 Elite NZ NEW: Auto 127km, ABS
Brakes, Stability Control, Multi
Airbags
\$12995



2012 NISSAN MARCH:
Auto, Central Locking, Air Con, ABS
Brakes, Air Bags, CD Player, SUPER
ECONOMY, 78km



ONLY \$7995

2012 HOLDEN BARINA 1.6 HATCH
NZ NEW LOW KMS
A/C, Alloy Wheels, Remote Central
Locking, Cruise Control, Multiple Air Bags,
Power Windows & Mirrors, Bluetooth
Audio/Phone Connection 45KM



ONLY \$11,995

2008 MAZDA DEMIO 1.5 5 SPEED
DOHC, 16 Valve, Variable Valve Timing,
EFI, P/S, Power Windows & Mirrors, ABS
Brakes, Air Bags, Tinted Windows, 17"
Alloy Wheels.

ONLY \$7995



09 Demio 1.3 Auto
BARGAIN PRICE
\$7995

2009 KIA RIO 1.6 EX
NZ NEW, Automatic, Power Windows, Remote Central Locking,
Air Conditioning, ABS Brakes, Multiple Air Bags, CD Player,
Electronic Stability Control, Alloy Wheels 100kms

ONLY \$7,995



2011 SUZUKI SWIFT GLXA NZ NEW
NZ NEW Automatic, Variable Valve Timing, Electronic Fuel
Injection, Power Steering, Power Windows & Mirrors, Central
Locking, Climate Control Air Con, CD Player, ABS Brakes, Dual
Airbags, Electronic Stability Control

ONLY \$8,995



VEHICLES ARRIVING DAILY - SEE ONSITE SPECIALS FROM \$3,000
OR VISIT MERITCARS.CO.NZ



LOCALLY OWNED & OPERATED

Ph 06 281 1925 • Chris Elliot 027 471 5972

Ph 06 757 3585 • Paul Butler 027 449 5382